
TeamDrive Agent Documentation

Release 4.1.4

TeamDrive Systems GmbH

February 12, 2016

1	Copyright Notice	1
2	Introduction	2
2.1	Overview	2
3	Windows Installation	5
3.1	Requirements	5
3.2	Required Skills	5
3.3	Installation	5
3.4	Post-Installation Tasks	7
3.5	Changing the Windows User Account	9
3.6	Accessing Network Shares	10
3.7	Uninstalling the TeamDrive Agent	10
4	Linux Installation	11
4.1	Requirements	11
4.2	Installation on RPM based Distributions	11
4.3	Installation on other Distributions	12
4.4	Starting and Stopping	12
4.5	Initial Set-Up	12
5	Performance Consideration	13
6	Migrating from TeamDrive 3	14
7	Troubleshooting	15
7.1	Administration interface is not available (Linux)	15
7.2	Installation error: Problem running post-install step (Windows)	15
8	Synopsis	17
9	Options	18
9.1	Local Installation Settings	18
9.2	Registration Server Communication	19
9.3	Synchronization Settings	20
9.4	Agent Settings	20
9.5	Platform specific Settings	21
10	Configuration Files	22
11	TeamDrive Http Api	23
11.1	Overview	23

11.2	Requirements	23
11.3	Security Considerations	23
11.4	Authentication	24
11.5	Interface Overview	26
11.6	Interface Description	27
11.7	Common JSON Data Types	57
12	Change Logs	60
12.1	TeamDrive Agent 4.1.4	60
12.2	TeamDrive Agent 4.1.3	60
12.3	TeamDrive Agent 4.1.2	60
12.4	TeamDrive Agent 4.1.1	60
12.5	TeamDrive Agent 4.1	61
12.6	TeamDrive Agent 4.0	61
12.7	TeamDrive Agent 3.3.1	61
12.8	Web User Interface 1.0.2	61
13	Indices and tables	62
	Index	63

COPYRIGHT NOTICE

Copyright © 2015, TeamDrive Systems GmbH. All rights reserved.

TeamDrive Systems GmbH

<https://www.teamdrive.com>

Max-Brauer-Allee 50

22765 Hamburg, Germany

Email: info@teamdrive.com

INTRODUCTION

This manual will guide you through the installation of your TeamDrive Agent. This document is intended for system administrators and users, who need to install and configure a TeamDrive Agent.

This Installation Guide outlines the deployment of a stand alone TeamDrive Agent, which is not part of a Web Portal.

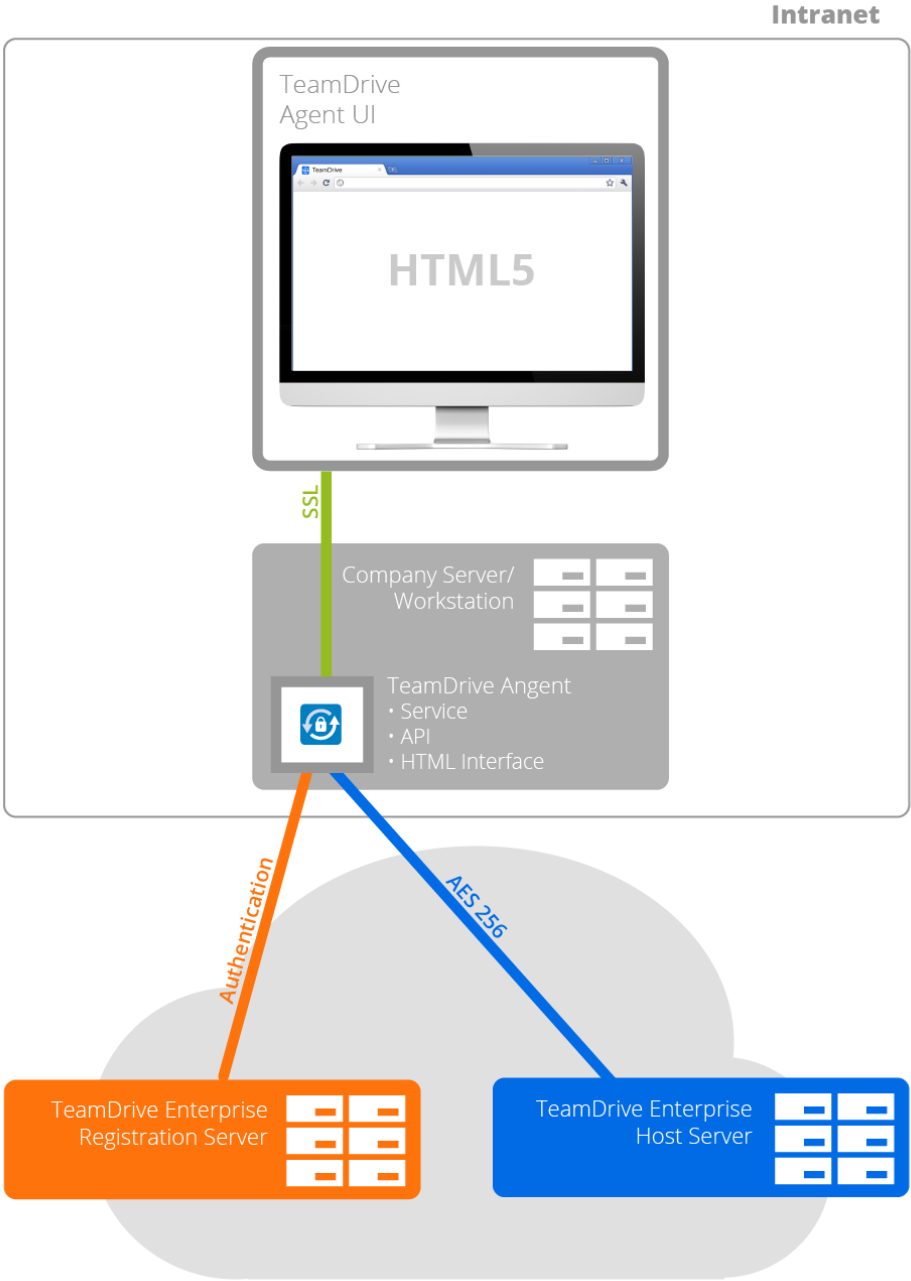
2.1 Overview

The TeamDrive Agent is a full featured TeamDrive Client without a graphical user interface. An Agent provides:

- Synchronization of Spaces with the Cloud.
- Synchronization of Spaces with a local file system.
- Synchronization of Spaces with a remote file system.
- Management GUI using a Web App.
- API access using JSON calls.

This figure shows an overview of a TeamDrive Agent installation:

TeamDrive Agent



Typically, a TeamDrive Agent is installed on a server or network attached storage and communicates with the TeamDrive Cloud.

WINDOWS INSTALLATION

3.1 Requirements

The *TeamDrive Agent* allows a TeamDrive Windows client to be installed and run as a Windows service. The *TeamDrive Agent* can be run without a GUI and allows data to be synchronized in the background, even when a Windows user is not currently logged in.

The support of older Windows versions has been dropped. The minimum supported Windows version is **Windows 7** or **Windows Server 2009**.

In order to install the *TeamDrive Agent*, you will need at least 50 MB of free disk space, a valid email address and Internet access. In the end, the total amount of disk space used will depend on the size of your created and/or joined Spaces.

If it is your first time installing and using TeamDrive you will need to create a TeamDrive account before installing the *TeamDrive Agent*. TeamDrive cannot be used without an account.

3.2 Required Skills

When installing the *TeamDrive Agent*, we assume that you have basic knowledge of:

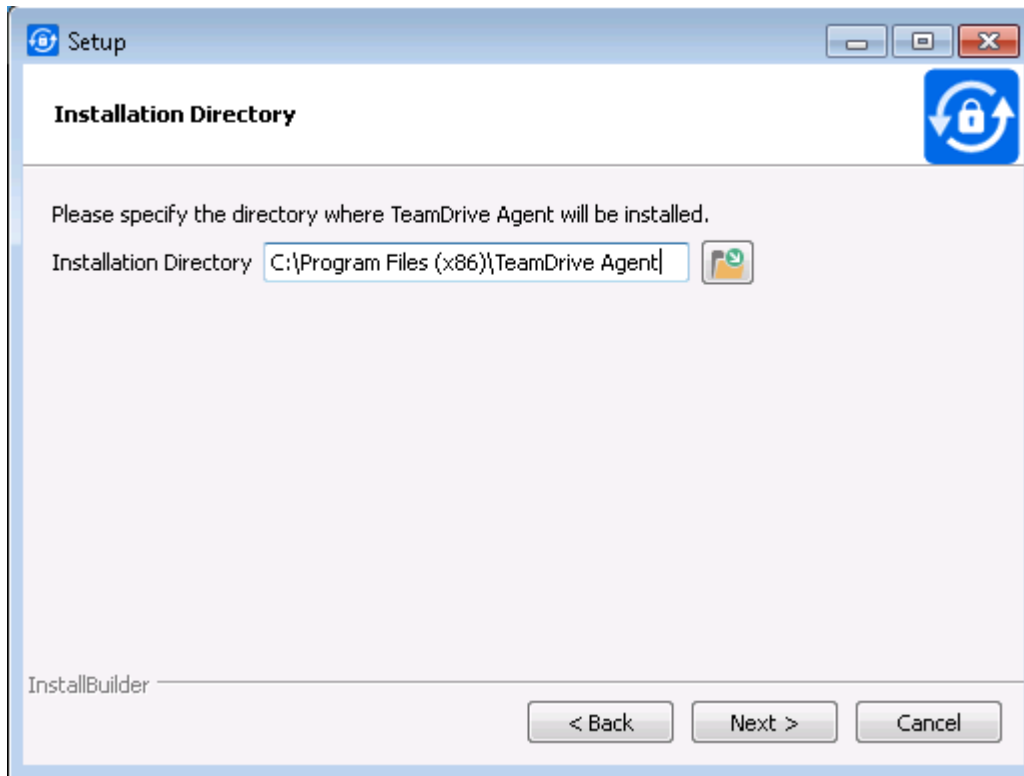
- Starting and stopping of Windows Services
- Configuration of a firewall

3.3 Installation

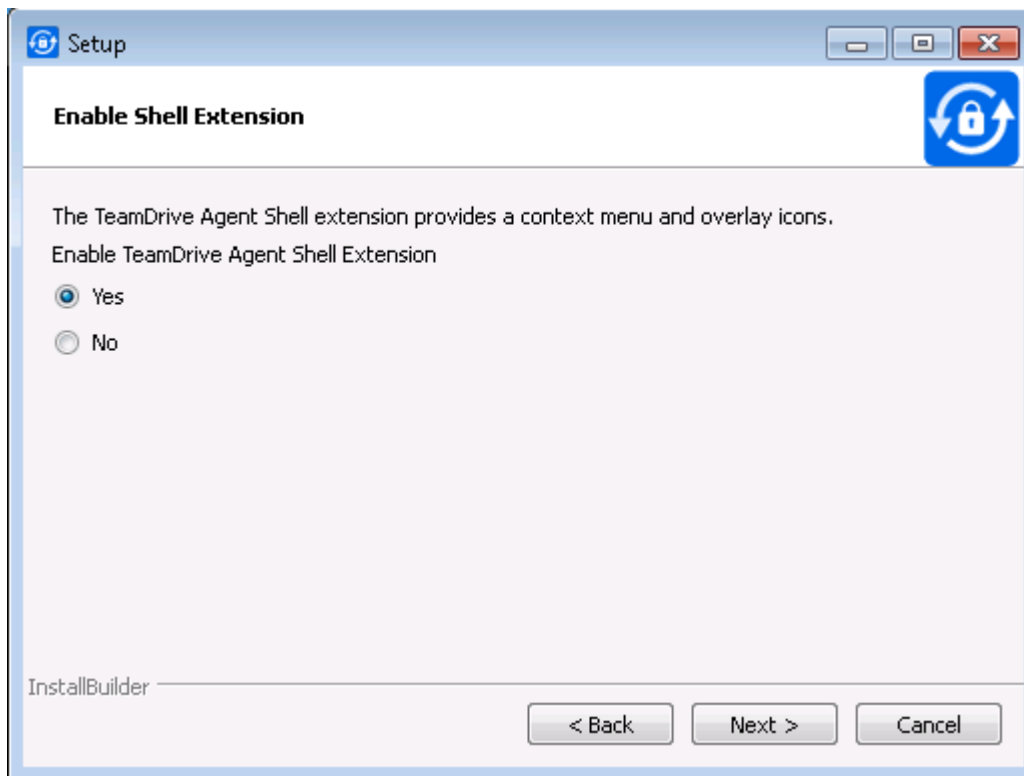
After you have successfully downloaded the *TeamDrive Agent*, double-click the installation file to start the installation.

Note: In order to install the *TeamDrive Agent* on a Windows terminal server, you need to put the server into a special installation mode by executing *Change user /install* at a command prompt.

1. To install the *TeamDrive Agent*, please specify an installation directory as seen in the following screen shot. We recommend not changing the installation directory to another location, as using the default directory will help with future version upgrades.

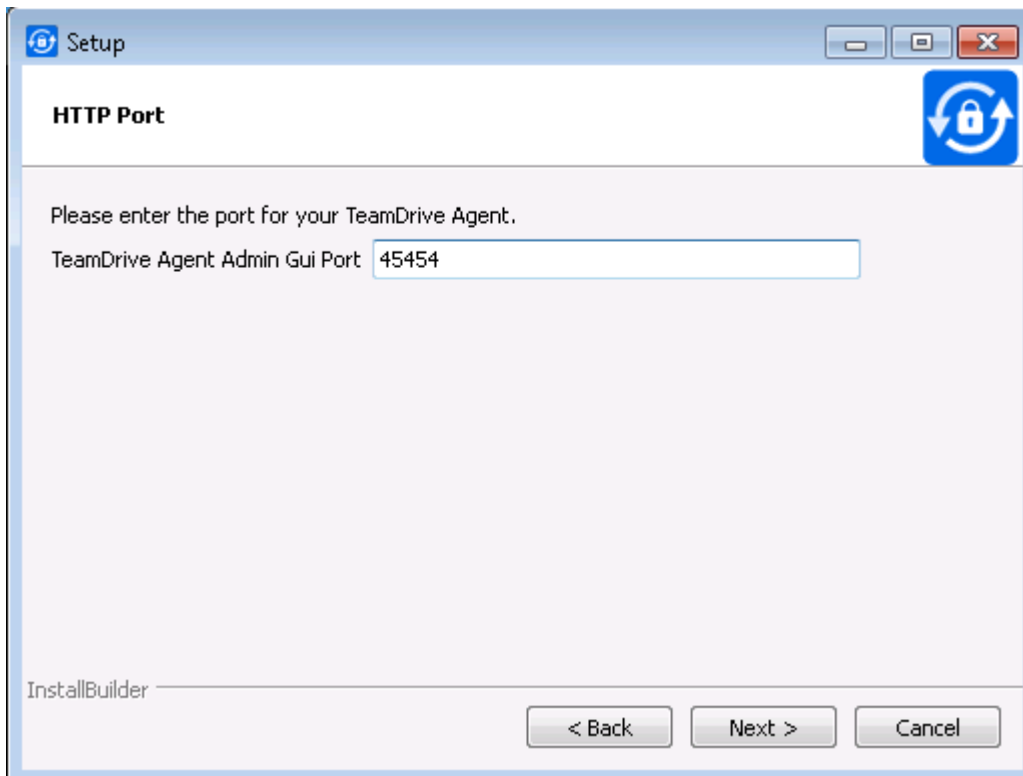


2. Afterwards, you can choose to install a Windows Explorer integration which provides some context menu entries and overlay icons that show the current synchronization status of Spaces, folders and files:



3. In order to administer the *TeamDrive Agent*, you will need to specify a TCP port. This port will be used to

provide an administration interface using your web browser. You can choose another port number, but further examples in this document will use the port *45454*:

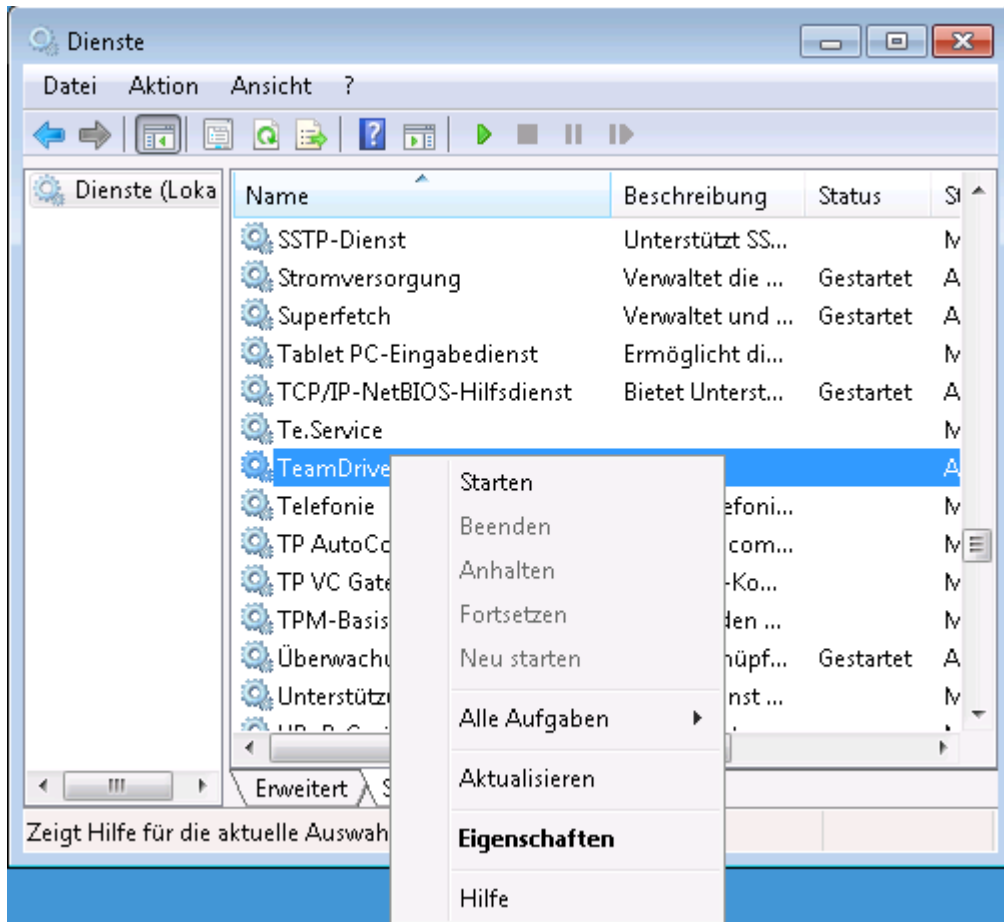


4. During the installation, the *TeamDrive Agent* will be registered as a Windows service under the name "*TeamDrive Agent Client*". Please be aware that the Windows user logged in at the time of the *TeamDrive Agent Client*'s installation is automatically associated with this Windows service. Only this Windows user will be able to access the settings file of the *TeamDrive Agent*.

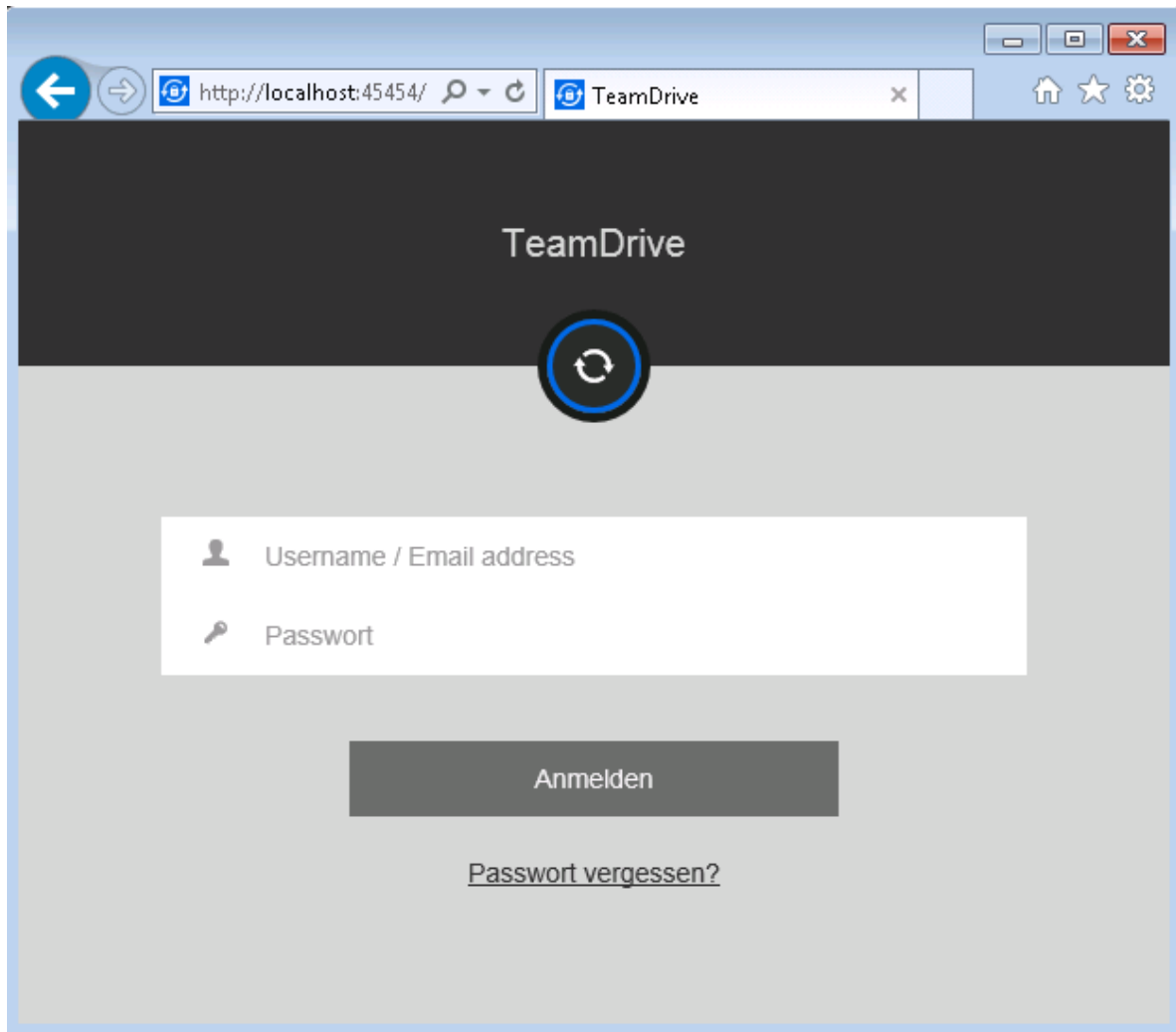
3.4 Post-Installation Tasks

To be able to synchronize files with the *TeamDrive Agent*, some initial steps are required.

1. Open the Windows services overview (e.g. on Windows 8 "Control Panel" → "Administrative Tools" → "Services").
2. Please start the Windows service "*TeamDrive Agent Client*":



3. Open your browser and go to <http://localhost:45454>. Please replace the port with the one that was used during installation:



You can now activate Spaces in the administration interface. Your TeamDrive Spaces will now be synchronized in the background.

3.5 Changing the Windows User Account

If at some point you wish to change which Windows user you would like to use to manage the *TeamDrive Agent*, you simply need to edit the configuration file “teamdrive.ini”.

You can navigate to the file using “%ProgramData%” → “TeamDrive3” → “teamdrive.ini” or simply `C:\ProgramData\TeamDrive3\teamdrive.ini`. Open the file with a text editor, locate the entry “teamdrive-home-agent=” and replace the old Windows user account with the new desired Windows user account in the given file path. Here is an example of a typical *teamdrive.ini* that was created by the installer:

```
[Settings]
teamdrive-home-agent=C:/Users/teamdrive/AppData/Roaming/TeamDrive3
http-api-port-agent=45454
shell-extension-user-agent=teamdrive
```

Please also look at the documentation of `teamdrived --teamdrive-home` (page 18), `teamdrived --http-api-port` (page 20) and *Platform specific Settings* (page 21).

The setting *shell-extension-user-agent* must be set to the same Windows username as in the *teamdrive-home* setting. Afterwards, please continue with *Post-Installation Tasks* (page 7).

3.6 Accessing Network Shares

In order to access Spaces on network shares, the Windows account needs to be changed to a user, who has rights to access network shares. It is recommended to use the Windows account used to install the *TeamDrive Agent*.

Note: the *TeamDrive Agent* running as a Windows Services may not be able to access mapped network drives. It is recommended to use a *UNC* path directly as a Space root.

3.7 Uninstalling the TeamDrive Agent

To completely remove the TeamDrive Agent and all files from you System, follow these Steps:

1. Stop the *TeamDrive Agent Client* Windows Service
2. Execute the *uninstall.exe* executable and follow the wizard.
3. You may now delete the *teamdrived --teamdrive-home* (page 18) folder containing the application data.
4. If you have used a different *TeamDrive Data* path, please also delete this folder. See *teamdrived --data-path* (page 18) for details.
5. You can now delete the Spaces path as configured in *teamdrived --spaces-path* (page 18). Keep in mind that this folder may contain your Space key backups. Without the keys, you may no longer be able to access your Spaces.
6. Open a Administrator console and execute this command to also remove the Windows Service:

```
Microsoft Windows [Version 6.1.7601]
Copyright (c) 2009 Microsoft Corporation. All rights reserved.

C:\Windows\system32>sc delete "TeamDrive Agent Client"
[SC] DeleteService SUCCESS
```

LINUX INSTALLATION

At the moment, you can either use the 64 bit RPM package or the 64 bit .tar.gz file.

4.1 Requirements

The Library Dependencies are moderate and should be provided by all recent linux distributions:

Library	Version
GLibc	2.9
GLibc++	3.4.11
libz	

Under Linux, TeamDrive is using the `inotify`¹ API of the Linux kernel to be notified about file modifications. Under some Linux distributions, there is a rather small limit regarding the number of files that can be watched. You can find out the current watch handle limit by executing `cat /proc/sys/fs/inotify/max_user_watches` in a terminal. If this number is lower than the number of files in your Spaces, please increase this value by adding for example `fs.inotify.max_user_watches=100000` to your `/etc/sysctl.conf` file. Please reboot your system afterwards.

4.2 Installation on RPM based Distributions

If you are on a RPM based distribution, please install the TeamDrive Agent by installing the rpm file.

The TeamDrive Agent is hosted on a dedicated yum repository. This makes the installation and applying of future updates very easy — you can simply run `yum update` to keep your TeamDrive Agent up to date.

To enable the repository, you need to download the `td-agent.repo` file and place it into the directory `/etc/yum.repos.d/`, e.g. by using `wget`:

```
[root@agent ~]# wget -O "/etc/yum.repos.d/td-agent.repo" \
"http://repo.teamdrive.net/td-agent.repo"
```

This will enable the “TeamDrive Agent Version 4” repository, which you can check by running `yum repolist` afterwards:

```
[root@agent ~]# yum repolist
Loaded plugins: security
repo id           repo name          status
td-agent-4        TeamDrive Agent Version 4    4
base              CentOS-6 - Base      6.367
extras            CentOS-6 - Extras    14
```

¹ <http://man7.org/linux/man-pages/man7/inotify.7.html>

```
updates                CentOS-6 - Updates                1.094
repolist: 7.477
```

To install the TeamDrive Agent, install the following package via yum from the “TeamDrive Agent” repository:

```
[root@agent ~]# yum install teamdrive-Agent
```

Please continue with *Starting and Stopping* (page 12).

4.3 Installation on other Distributions

To install the TeamDrive Agent on a non-RPM based distribution, please download the Agent manually for example by using wget:

```
wget http://s3download.teamdrive.net.s3.amazonaws.com/4.<version>/TMDR/linux-x86_64/TeamDrive_Agent_4
```

Please replace *<version>* with the latest release. Now, please extract the *TeamDrive Agent*:

```
tar -xvzf TeamDrive_Agent_4.<version>_x86_64.tar.gz
```

This will extract the TeamDrive Agent into a subdirectory *TeamDrive*.

Note: The *tar.gz* file does not register a *teamdrive-Agent* command on your system.

4.4 Starting and Stopping

Before starting the TeamDrive Agent for the first time, please also read *Initial Set-Up* (page 12).

Please start TeamDrive by using the shortcut in your desktop menu or bar. Alternatively, you can execute the global command “teamdrive-Agent” or “./teamdrived” from the installation folder. TeamDrive requires some system settings that are not available by executing the *teamdrived.bin* executable directly.

Note: Running TeamDrive as root is not recommended. TeamDrive runs perfectly without privileges.

To stop the TeamDrive Agent, please execute:

```
/opt/teamdrive/TeamDriveApi.py '<agent-host>:<port>' quit False
```

Replace *<agent-host>* with the host where your TeamDrive Agent is installed and the port with the one you specified.

4.5 Initial Set-Up

To administrate your TeamDrive Agent, you need to enable the HTTP API by setting the *teamdrived --http-api-port* (page 20) option either as a command line argument or as a setting.

Then start the TeamDrive Agent, open your favorite browser and go to *http://<agent-host>:45454*. Replace *<agent-host>* with the host where your TeamDrive Agent is installed and the port with the one you specified. Log-in to your TeamDrive account now.

PERFORMANCE CONSIDERATION

The TeamDrive Agent is typically used to synchronize data on a central server. These are some guidelines to optimize the performance of the TeamDrive Agent in this situation:

1. Do not mount the file system over the network, which contains the data that will be synchronized. Network shares are much slower than local file systems. Using a network share will limit the number of files and directories per Space.
2. Use more than one TeamDrive Space. Using more than one Space can increase the performance. For example, you could have one Space per project or team.

MIGRATING FROM TEAMDRIVE 3

The application data directory (specified by the `teamdrived --teamdrive-home` (page 18) parameter) is compatible to TeamDrive 3 and will be updated in this process.

1. Perform a full system backup in order to be able to restore your system if you encounter unexpected errors.
2. Shutdown the TeamDrive 3 Agent.
3. Install the new TeamDrive 4 Agent as described, but do not start the TeamDrive Agent.
4. Make sure that you have only one installation of the TeamDrive Agent. Manually delete older TeamDrive 3 installations in case they are not automatically deleted. Keep in mind that the application data directory will be used by TeamDrive 4 afterwards.
5. Start the TeamDrive 4 Agent. See *Initial Set-Up* (page 12).

Warning: On Windows, the `uninstall.exe` will delete the application data directory. Be careful when removing old installations.

TROUBLESHOOTING

TeamDrive stores log output to %APPDATA%\TeamDrive3\logs or ~/.teamdrive/logs. Please search for [Critical] messages that can be a hint to an error.

7.1 Administration interface is not available (Linux)

If you are not able to access the administration interface in your browser, please check that TeamDrive has opened a TCP port:

```
[root@agent ~] netstat -twaunp
```

Please edit the settings file and set TeamDrive to open the port 45454. This can be done by editing the file ~/.teamdrive/teamdrive.settings file. This is an example:

```
[root@agent ~] vim ~/.teamdrive/teamdrive.settings
```

Add the following entries:

```
[Settings]
http-api-type=tcp
http-api-port=45454
```

Restart TeamDrive with the following commands:

```
[root@agent ~] killall teamdrived.bin
# Wait 10 seconds
[root@agent ~] ./teamdrived
```

TeamDrive stores log output to %APPDATA%\TeamDrive3\logs or ~/.teamdrive/logs. Please search for [Critical] messages that can be a hint to an error.

7.2 Installation error: Problem running post-install step (Windows)

This issue is related to how a Windows Terminal Server works. It is redirecting the CSIDL_WINDOWS path to user's home directory such as C:\Users\username\Windows. This can be solved by switching the machine to install mode before running the installer, which can be done by running the Programs and Features from *Control Panel* and choosing to *install an application in terminal server*. It can also be done by running `change user /install` command from command prompt and change it back to execution mode by running `change user /execute` after the installer finishes.

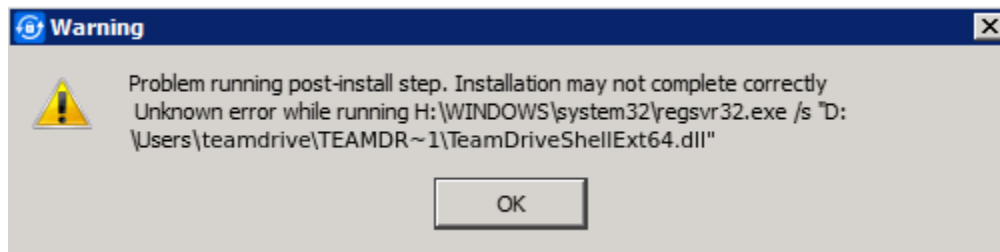


Fig. 7.1: Error message shown by the installation process on a Windows Terminal Server.

SYNOPSIS

teamdrived [options] (autostart | shutdown)

OPTIONS

This is a list of known settings or command line arguments that are used by TeamDrive.

9.1 Local Installation Settings

--spaces-path

Default path for newly created Spaces by the user.

Note: On Windows, this path may not contain backslashes. Please use slashes instead like this:
C:/Path/to/Spaces.

--teamdrive-home

Set TeamDrive application data path. Typically `~/.teamdrive` on Linux or Mac OS and `%APPDATA%\TeamDrive3` on Windows.

Note: On Windows, this path may not contain backslashes. Please use slashes instead like this:
teamdrive-home=C:/Path/to/Appdata.

--data-path

Default location for temporary data and cache files. Defaults to `teamdrived --teamdrive-home` (page 18)

Note: On Windows, this path may not contain backslashes. Please use slashes instead like this:
data-path=C:/Path/to/TeamDrive Data.

--default-server

Default host server to create spaces on

--perform-backup=true/false (default: true)

Enable / Disable creation of Backups

--backup-path

Set the Backup path

Note: On Windows, this path may not contain backslashes. Please use slashes instead like this:
backup-path=C:/Path/to/Backups.

--language

Set the user interface language. This setting is deprecated.

Deprecated since version 4.1.3.

--autostart-delay

Delay background tasks to speedup system startup time

--working-set-size

Maximum cache size

--enable-folder-decoration=true/false (default: true)

Enable / Disable file system folder decoration

--enable-create-favorite-link-to-spaces=true/false (default: true)

Windows only: creates a shortcut in the Windows explorer favorites to the *teamdrived --spaces-path* (page 18) folder.

--device=<device>

if *device* is “softwarecontext”, TeamDrive will use the QtQuick2dRenderer as the rendering backend (Windows only)

--enable-multi-processes=true/false (default: false)

Allow spawning of multiple TeamDrive instances.

--enable-shell-extension=true/false (default: true)

Enables or disables the Windows Explorer integration or the Finder Extension.

New in version 4.1.2.

autostart

Don't show the main window.

shutdown

Shutdown the currently running TeamDrive process.

webgui

Lauches TeamDrive with a WebGUI instead of the normal user interface.

Note: Desktop only.

9.2 Registration Server Communication

--check-for-updates=true/false (default: true)

The TeamDrive Client will check for software updates on the Registration Server. Set this value to false, if a software distribution tool will be used to deploy Client installations to your users.

--auto-accept-invitation=true/false (default: false)

When set to true, the TeamDrive Client will accept all Space invitations automatically and join these Spaces.

--auto-accept-invitation-mode (default: archived)

The mode of operation when joining Spaces automatically. Possible values are: current-version-only, all-versions, directory-information-only, no-sync-to-filesystem, offline-available, archived.

--auto-invite-users=list

A list of user names to be automatically invited into newly created Spaces with specified DefaultInvitationRights. The list has to be separated by semicolons and enclosed with double quotes in the settings file. Example: auto-invite-users="abc;def"

--enable-key-repository=true/false (default: true)
 Enable / Disable the Key Repository.

9.3 Synchronization Settings

--default-file-permissions
 Default unix file permissions. Default is 644.

--default-dir-permissions
 Default unix directory permissions. Default is 755.

--scan-enabled=true/false (default: true)
 On startup, the internal database will be compared with the file system using a file system scan to detect Space changes while TeamDrive was not running.

--default-publish-expiry-days (default: 0)
 Default value for the number of days, a file is published. Requires a *HostServer* Version ≥ 3.5 . A value of 0 means *unlimited*.

9.4 Agent Settings

--http-api-port=<host>
 where <host> equals one of the following:

- 1.a port number (e.g. 45454)
- 2.an IPv4 address including the port number (e.g. 127.0.0.1:45454)
- 3.an IPv6 address including the port number (e.g. [::0]:45454)
- 4.a pipe or socket name. Requires `http-api-type=local`.
- 5.a pipe or socket name. Requires `http-api-type=local`.

--http-api-type
 Sets the type of the HTTP API.

- 1.local: Opens a Named pipe on Windows or a Socket file on Linux
- 2.tcp: Opens a TCP port.
- 3.ssl: Opens a SSL/TLS encrypted TCP socket. See *teamdrived --http-api-private-key* (page 20) and *teamdrived --http-api-certificate* (page 20)

--http-api-certificate
 SSL-Server only: A path to a certificate file for the api (PEM format).

Note: On Windows, this path may not contain backslashes. Please use slashes instead like this:
`http-api-certificate=C:/Path/to/Certificate.pem`

--http-api-private-key
 SSL-Server only: A path to a RSA private file for the certificate (PEM format). See also *teamdrived --http-api-certificate* (page 20).

Note: On Windows, this path may not contain backslashes. Please use slashes instead like this: `http-api-private-key=C:/Path/to/Key.key`.

--idle-shutdown-timeout

The number of idle seconds, until the TeamDrive Agent shuts itself down. Typically used with automatically shutdown of Linux containers. Default: no timeout.

New in version 4.1.1.

--http-api-external-register-url

This url will be used to show a “Register Now” link in the Web UI. This setting is mainly useful for Web Portals.

New in version 4.1.1.

--http-api-external-login-url

This url will be used to redirect the Browser if a login is required. This setting is intended to be used for external authentication.

New in version 4.1.1.

--http-api-compress-replies=true/false (default: true)

Use a zipped HTTP content-encoding for JSON replies.

New in version 4.1.1.

9.5 Platform specific Settings

It is possible to limit a setting to a specific domain. For example if you add `-linux` to a setting, this setting will only affect Linux clients.

Suffix	Description
<code>-mac</code>	Mac OS X only.
<code>-win</code>	Windows only.
<code>-linux</code>	Linux Clients only.
<code>-agent</code>	Used by the Headless Agent.

CONFIGURATION FILES

TeamDrive reads settings from these locations:

1. Program arguments as mentioned above.
2. The read-only DISTRIBUTOR file in the application installation path, eg. `C:\Program files\TeamDrive\DISTRIBUTOR` or `/opt/teamdrive/DISTRIBUTOR`.
3. A system wide configuraion file. Windows: `%ProgramData%\TeamDrive3\teamdrive.ini`, Linux: `/etc/teamdrive.ini`, Mac OS: `/Users/Shared/teamdrive.ini`.
4. The `teamdrive.settings` file in the application data directory, eg. `teamdrived --teamdrive-home` (page 18). Typically `~/.teamdrive` on Linux or Mac OS and `%APPDATA%\TeamDrive3` on Windows.
5. The Registration Server may also provide some of these settings. Please consult the Registration Server documentation for details.

The majority of arguments can also be added to **[Settings]** Section of the configuraion files.

This is a valid `teamdrive.settings` file that sets two settings on Linux:

```
[Settings]
language=en-US
spaces-path=/home/teamdrive/Spaces
```

And this is the corresponding settings file for Windows:

```
[Settings]
language=en-US
spaces-path=C:/Users/TeamDrive/Documents/Spaces
```

Please note the usage of forward slashes instead of backslashes on Windows. Also notice that a setting in the `teamdrive.settings` file is not prefixed by two dashes (`--`).

TEAMDRIVE HTTP API

11.1 Overview

The *TeamDrive Agent* offers a JSON interface via HTTP, which allows you to operate the *TeamDrive Agent* without using the GUI. The JSON interface can be activated by specifying the `teamdrived --http-api-port` (page 20) option.

The command line application *TeamDriveApi.py* is located in the *TeamDrive Agent* installation directory (e.g. `C:\Program Files (x86)\TeamDrive 3 Agent`). Running this file allows you to use the TeamDrive API directly. See *Options* (page 18) for a list of Options and Settings.

If you would like to use the TeamDrive HTTP API without Python, HTTP *GET* requests can be made directly through *TeamDrive Agent*. The URL will need to be constructed as follows:

```
http://<host>/api/<command>?<parameters>
```

For example:

```
http://[::1]:45454/api/getSpace?id=1
```

The result is a JSON document.

11.2 Requirements

In order to run use the interface, you will need the these requirements:

- TeamDrive Desktop Client or *TeamDrive Agent*

The Python module and Command line interface requires

- *Python* in your *PATH* variable.
- Recommended: docopt for Python.
- `TeamDriveApi.TeamDriveApi.sse()` (page 55) requires *Python 3*.

11.3 Security Considerations

Communicating with the *TeamDrive Http Api* contains sensitive information, for example user names, passwords and file data. There are mechanisms to provide authentication and privacy.

11.3.1 Restricting the availability of the Api

By restricting the api to the local host, any attempt to access the api from another host will fail:

```
http-api-port=127.0.0.1:<port>
```

Although, this does not prevent the usage of the api from another user of this system.

11.3.2 Using a local socket or a named pipe

One can further reduce the availability by specifying the type of the api like this:

```
http-api-type=socket  
http-api-port=<name>
```

<name> can be a user defined string. The Unix socket file will be placed in */tmp* on Mac OS X and on Linux.

11.3.3 Using HTTPS for communication with the TeamDrive Agent

HTTPS can be enabled by setting *type* to *ssl* like this:

```
http-api-type=ssl  
http-api-port=443
```

It is recommended to use port 443 for communication with browsers, because using a non-standard port for HTTPS is considered insecure. Please also have a look at the `teamdrived --http-api-certificate` (page 20) and `teamdrived --http-api-private-key` (page 20) settings.

11.4 Authentication

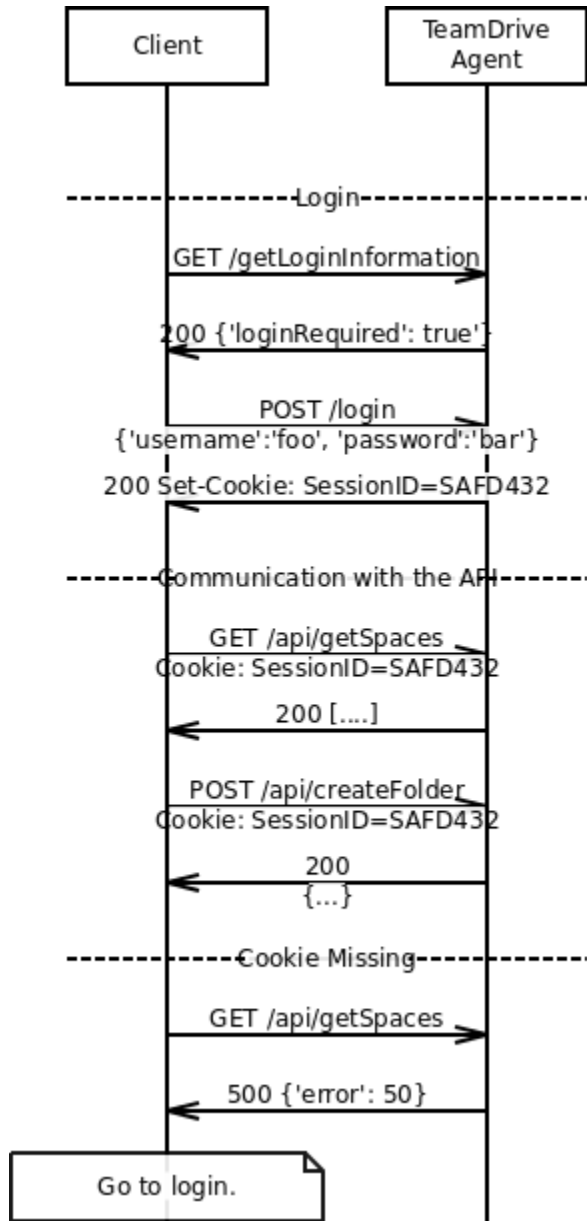
In order to prevent unauthorized users from accessing the *TeamDrive Http Api*, an authentication is **required** to access the api. There are two ways to authenticate clients:

1. Statefull Session Cookies
2. Stateless Authorization Header

11.4.1 Session Cookies

Session Cookies are mainly used to authenticate Web Browsers. Using a session requires a call to `TeamDriveApi.TeamDriveApi.login()` (page 46) to retrieve a cookie from the server. `TeamDriveApi.TeamDriveApi.getLoginInformation()` (page 38) can be used to determine if a login is required.

Login with the Api using Cookies should follow this protocol:



In the case of a missing Cookie, a `TeamDriveApi.TeamDriveException.Error_Missing_Session` (page 57) is returned

11.4.2 Authorization Header

This stateless alternative to Cookies uses HTTP Basic Authentication. **Every** request to the Api requires an *Authorization Header* following [RFC 2617](#).

Currently, The Agent does *not* answer requests without Authentication Header appropriately. It is expected, that clients send the Authorization Header unconditionally.

11.5 Interface Overview

TeamDrive provides two API endpoints:

- The `/api` endpoint provides meta data about all elements of TeamDrive
- The `/files` endpoint provides an interface for reading and writing the file content.

11.5.1 Communicating with the `/api` endpoint

This is the reference documentation of the TeamDrive Client API. As a convenience, there is a Python module that provides accessor functions for each API call, which is also usable as a command line interface. Please have a look at all possible usages.

Example using curl:

```
$ curl '127.0.0.1:45454/api/getLoginInformation'
{ "isLoginRequired" : true }
```

Example using the Python module:

```
>>> from TeamDriveApi import TeamDriveApi
>>> api = TeamDriveApi("127.0.0.1:45454")
>>> map(api.getSpace, api.getSpaceIds())
[{}]
```

Example using the command line:

```
./TeamDriveApi.py '127.0.0.1:45454' getLoginInformation
{
  "username": "My Username",
  "apiUrl": "/",
  "isLoginRequired": false
}
```

Example Session (Initial Login):

```
# Start TeamDrive:
exec /opt/teamdrive/teamdrived

# Wait for it:
sleep 5

# Log-in
./TeamDriveApi.py '127.0.0.1:45454' --user myUser --pass myPass login

# Create a new Space
./TeamDriveApi.py '127.0.0.1:45454' --user myUser --pass myPass createSpace

# Call Functions
./TeamDriveApi.py '127.0.0.1:45454' --user myUser --pass myPass createFolder

# Quit TeamDrive without logout
./TeamDriveApi.py '127.0.0.1:45454' --user myUser --pass myPass quit False
```

Example Session:

```

exec /opt/teamdrive/teamdrived
sleep 5

# No need to login now
./TeamDriveApi.py '127.0.0.1:45454' --user myUser --pass myPass createFolder

# Quit TeamDrive without logout
./TeamDriveApi.py '127.0.0.1:45454' --user myUser --pass myPass quit False

```

Example Session (After previous Logout):

```

# If the previous session ended with a logout:
./TeamDriveApi.py '127.0.0.1:45454' --user myUser --pass myPass quit True

# The next call should start with a login:
exec /opt/teamdrive/teamdrived
sleep 5
./TeamDriveApi.py '127.0.0.1:45454' --user myUser --pass myPass login
./TeamDriveApi.py '127.0.0.1:45454' --user myUser --pass myPass createFolder

```

See also:

TeamDriveApi.TeamDriveException (page 56) for Errors returned by the API.

See also:

Chapter *Authentication* (page 24) regarding Authentication.

11.5.2 Communicating with the /files endpoint

See *TeamDriveApi.TeamDriveApi.putFile()* (page 48) for Details.

11.5.3 Passing Parameters to the API

The format of parameters depend on the HTTP method:

- Parameters for GET-requests should be passed by a query string in the url. For example `curl --user myTeamDriveUser http://127.0.0.1:45454/api/getSpace?id=310`
- Parameters to POST-requests can either be a JSON object or data encoded using `application/x-www-form-urlencoded`.

11.6 Interface Description

11.6.1 TeamDriveApi.TeamDriveApi

class `TeamDriveApi.TeamDriveApi` (*server='[:1]:45454', username='', password=''*)

Return type *TeamDriveApi* (page 27)

Raises

- `httplib.HTTPException` – a Connection Error.
- `socket.error` – a Connection Error.
- `ConnectionRefusedError` – a Connection Error.

about ()

Returns information about TeamDrive.

Returns

```
{
  "version": "4.0.12 (Build: 1294)",
}
```

Changed in version 4.1.1: no longer returns license infos. call *getLicense* (page 38) instead.

Return type dict

Raises

- **httplib.HTTPException** – a Connection Error.
- **socket.error** – a Connection Error.
- **ConnectionRefusedError** – a Connection Error.
- **ValueError** – no JSON returned. Wrong URL?

addAddressbook (name)

Adds a new Address book entry. TeamDrive will lookup that name on the RegServer. If that fails, an exception is thrown. You cannot add email addresses.

Using this function requires the HTTP POST method.

Parameters **name** (*str*) – the new Addressbook's name.

Returns the id of the new entry.

Return type dict

Raises

- **httplib.HTTPException** – a Connection Error.
- **socket.error** – a Connection Error.
- **ConnectionRefusedError** – a Connection Error.
- **TeamDriveException** – user is unknown.
- **ValueError** – no JSON returned. Wrong URL?

addComment (fileId, comment)

Attaches the comment to the file.

Using this function requires the HTTP POST method.

See also:

getComments (page 34), *getSpaceComments* (page 40), *addSpaceComment* (page 29) and *removeComment* (page 50)

New in version 4.1.1.

Parameters

- **fileId** (*int*) – The corresponding id of the file
- **comment** (*str*) – The content of the new comment

Return type dict

Raises

- `httplib.HTTPException` – a Connection Error.
- `socket.error` – a Connection Error.
- `ConnectionRefusedError` – a Connection Error.
- `TeamDriveException` – Adding this comment failed.
- `ValueError` – no JSON returned. Wrong URL?

addSpaceComment (*spaceId, comment*)

Adds this comment to the Space.

Using this function requires the HTTP POST method.

See also:

[getComments](#) (page 34), [getSpaceComments](#) (page 40), [addComment](#) (page 28) and [removeComment](#) (page 50)

New in version 4.1.1.

Parameters

- `spaceId` (*int*) – The Space id.
- `comment` (*str*) – The content of the new comment

Return type dict

Raises

- `httplib.HTTPException` – a Connection Error.
- `socket.error` – a Connection Error.
- `ConnectionRefusedError` – a Connection Error.
- `TeamDriveException` – Adding this comment failed
- `ValueError` – no JSON returned. Wrong URL?

clearProfilePicture ()

Clears the profile picture of the current user.

See also:

[getProfilePicture](#) (page 39) to retrieve profile pictures and [setProfilePicture](#) (page 54)

New in version 4.1.1.

Return type dict

Raises

- `httplib.HTTPException` – a Connection Error.
- `socket.error` – a Connection Error.
- `ConnectionRefusedError` – a Connection Error.
- `ValueError` – no JSON returned. Wrong URL?

createFolder (*spaceId, filePath, trashed*)

Creates a new folder in that Space

Example:


```
$ ./TeamDriveApi.py '127.0.0.1:45454' createFolder 3 '/my new folder' False
```

```
{
  "result": true,
  "file": {
    "isDir": true,
    "name": "my new folder",
    "currentVersionId": 0,
    "spaceId": 3,
    "isInFileSystem": false,
    "path": "/",
    "id": 756,
    "permissions": "rwxr-xr-x"
  }
}
```

See also:

[getFullFolderContent](#) (page 37) or [getFolderContent](#) (page 36) for getting the content of this folder

New in version 4.0.

Returns A dict containing a [File](#) (page 58) object

Parameters

- **spaceId** (*int*) – The Id of the Space
- **filePath** (*str*) – The full folder path.
- **trashed** (*bool*) – In Trash?

Return type dict

Raises

- **httplib.HTTPException** – a Connection Error.
- **socket.error** – a Connection Error.
- **ConnectionRefusedError** – a Connection Error.
- **ValueError** – no JSON returned. Wrong URL?

createSpace (*spaceName, disableFileSystem, spacePath=None, importExisting=None*)

Creates a new Space with the given name.

To convert an existing folder into a TeamDrive Space, you need to set the *importExisting* parameter to True.

In case the url is called directly, the default for *disableFileSystem* is False and the *spacePath* is mandatory.

Using this function requires the HTTP POST method.

Throws [TeamDriveException](#) (page 56), if the call fails.

returns A dict containig the Id and a [Space](#) (page 57).

Parameters

- **spaceName** (*str*) – The Name of the new Space

- **disableFileSystem** (*bool*) – This will disable the synchronization into the file system. TeamDrive will only synchronize meta-data if this is *True*.
- **spacePath** (*str*) – File Path, in which the new Space will be created.
- **importExisting** (*bool*) – Tells the TeamDrive Agent to import an existing directory.

Return type dict

Raises

- **httplib.HTTPException** – a Connection Error.
- **socket.error** – a Connection Error.
- **ConnectionRefusedError** – a Connection Error.
- **TeamDriveException** – Space creation failed.
- **ValueError** – no JSON returned. Wrong URL?

deleteFileFromTrash (*fileId*)

Deletes a file from Trash by physically deleting the file from the server. This call fails, if you do not have the rights to delete files, it is a directory or the file is not in the trash.

Using this function requires the HTTP POST method.

Example:

```
>>> api = TeamDriveApi()
>>> for inTrash in api.getFullFolderContent(1, "/", True):
>>>     api.deleteFileFromTrash(inTrash["id"])
```

Throws *TeamDriveException* (page 56), if the call fails.

See also:

removeLocallyFile (page 50) and *setTrashed* (page 55).

New in version 4.0.

Parameters **fileId** (*int*) – The Id of the Space

Return type dict

Raises

- **httplib.HTTPException** – a Connection Error.
- **socket.error** – a Connection Error.
- **ConnectionRefusedError** – a Connection Error.
- **TeamDriveException** – Failed to queue command.
- **ValueError** – no JSON returned. Wrong URL?

deleteSpace (*id, delInFs, delOnServer, delInDB*)

Deletes a Space.

Using this function requires the HTTP POST method.

Throws *TeamDriveException* (page 56), if the call fails.

Parameters

- **id** (*int*) – The Id of the Space
- **delInFs** (*bool*) – Delete the Space in the File System

- **delOnServer** (*bool*) – Deletes the Space on the server. (requires Administrator rights)
- **delInDB** (*bool*) – Deletes the Space in the local Database

Return type dict

Raises

- **httplib.HTTPException** – a Connection Error.
- **socket.error** – a Connection Error.
- **ConnectionRefusedError** – a Connection Error.
- **TeamDriveException** – Deletion failed
- **ValueError** – no JSON returned. Wrong URL?

deleteVersion (*versionId*)

Deletes a file version finally from the server. This call fails, may may not have the rights to delete files,

Using this function requires the HTTP POST method.

Throws *TeamDriveException* (page 56), if the call fails.

See also:

getVersion (page 44)

New in version 4.1.4.

Parameters **versionId** (*int*) – The Id of the version

Return type dict

Raises

- **httplib.HTTPException** – a Connection Error.
- **socket.error** – a Connection Error.
- **ConnectionRefusedError** – a Connection Error.
- **TeamDriveException** – Failed to queue command.
- **ValueError** – no JSON returned. Wrong URL?

getActivities ()

Returns a list of all activities in the last 30 days. If *hasDetails* is true, a call to *getActivityDetails* (page 33) with the given *activityId* will return a list of details.

Possible activity types are:

- userInvited
- userJoined
- userLeft
- userKicked
- commentCreated
- commentDeleted,
- spaceCommentCreated
- spaceCommentDeleted
- versionAdded
- versionDeleted
- versionPublished
- versionUnpublished
- versionExpired

See also:

getActivityDetails (page 33)

New in version 4.1.1.

Returns A list of activities.

Return type list[dict]

Raises

- `httplib.HTTPException` – a Connection Error.
- `socket.error` – a Connection Error.
- `ConnectionRefusedError` – a Connection Error.
- `ValueError` – no JSON returned. Wrong URL?

getActivityDetails (*activityId*)

Returns a list of all activity details for an activity.

See also:

getActivities (page 32)

New in version 4.1.1.

Parameters `activityId` (*str*) – The activityId as returned by *getActivities* (page 32)

Returns A list of activityDetails.

Return type list[dict]

Raises

- `httplib.HTTPException` – a Connection Error.
- `socket.error` – a Connection Error.
- `ConnectionRefusedError` – a Connection Error.
- `ValueError` – no JSON returned. Wrong URL?

getAddressbook (*id*)

Returns information about a given Addressbook Id.

See also:

getFullAddressbook (page 36) for an example

Parameters `id` (*int*) – the Address Id.

Return type dict

Raises

- `httplib.HTTPException` – a Connection Error.
- `socket.error` – a Connection Error.
- `ConnectionRefusedError` – a Connection Error.
- `ValueError` – no JSON returned. Wrong URL?

getAddressbookByName (*addressName*)

This is convenience wrapper of the Python module that is not part of the official API.

Returns an Addressbook entry by a given user name. Throws a TeamDriveException, if there is no Space with this name.

Parameters *addressName* (*str*) – The Name.

Return type dict

Raises

- `httplib.HTTPException` – a Connection Error.
- `socket.error` – a Connection Error.
- `ConnectionRefusedError` – a Connection Error.
- `TeamDriveCallFailed` – There is no Space with this name
- `ValueError` – no JSON returned. Wrong URL?

getAddressbookIds ()

Returns all knows Addressbook Ids.

Return type list[int]

Raises

- `httplib.HTTPException` – a Connection Error.
- `socket.error` – a Connection Error.
- `ConnectionRefusedError` – a Connection Error.
- `ValueError` – no JSON returned. Wrong URL?

getComments (*fileId*)

Returns a list of all comments that are attached to a specific file in a space.

Example

```
>>> api = TeamDriveApi()
>>> api.getComments(4183)
```

Returns

```
[
  {
    "creator": "test",
    "creatorAddressId": 1,
    "text": "file baz",
    "created": "2015-09-01T15:15:31Z",
    "commentId": 16,
    "initials": "te"
  },
  {
    "creator": "test",
    "creatorAddressId": 1,
    "deleted": true,
    "created": "2015-09-01T15:15:28Z",
    "commentId": 15,
    "initials": "te"
  }
]
```

```
}
]
```

See also:

getSpaceComments (page 40), *addComment* (page 28), *addSpaceComment* (page 29) and *removeComment* (page 50)

New in version 4.1.1.

Parameters `fileId` (*int*) – The corresponding id of the file

Returns A list of comments.

Return type list[dict]

Raises

- `httplib.HTTPException` – a Connection Error.
- `socket.error` – a Connection Error.
- `ConnectionRefusedError` – a Connection Error.
- `ValueError` – no JSON returned. Wrong URL?

getFile (*id*)

Returns information about the given File Id.

returns A *File* (page 58) object

Parameters `id` (*int*) – The File id

Return type dict

Raises

- `httplib.HTTPException` – a Connection Error.
- `socket.error` – a Connection Error.
- `ConnectionRefusedError` – a Connection Error.
- `ValueError` – no JSON returned. Wrong URL?

getFiles (*spaceId*, *filePath*, *trashed*)

Returns a list of files matching Space Id, file path and trashed flag.

returns A list of *File* (page 58) objects

Parameters

- `spaceId` (*int*) – The Id of the Space
- `filePath` (*str*) – the path of the file in the Space.
- `trashed` (*bool*) – Is the file in the trash?

Return type list[dict]

Raises

- `httplib.HTTPException` – a Connection Error.
- `socket.error` – a Connection Error.
- `ConnectionRefusedError` – a Connection Error.

- **ValueError** – no JSON returned. Wrong URL?

getFolderContent (*spaceId*, *filePath*, *trashed*)

Returns a list of file Ids in a folder of a Space.

Example:

```
python ./TeamDriveApi.py '127.0.0.1:45454' getFolderContent 3 / False
[756,767,737,769,629,763,628,630,830,765]
```

Parameters

- **spaceId** (*int*) – The Id of the Space
- **filePath** (*str*) – The parent folder path.
- **trashed** (*bool*) – In Trash?

Return type list[int]

Raises

- **httplib.HTTPException** – a Connection Error.
- **socket.error** – a Connection Error.
- **ConnectionRefusedError** – a Connection Error.
- **ValueError** – no JSON returned. Wrong URL?

getFullAddressbook ()

Returns all Addressbook entries at once.

Example:

```
$ python ./TeamDriveApi.py '127.0.0.1:45454' getFullAddressbook
```

```
[
  {
    "id": 1,
    "email": "info@teamdrive.net",
    "name": "My Name",
    "icon": "self"
  }
]
```

Note: As this function was added with TeamDrive 4, the fall back for TeamDrive 3 is to iterate over all Addressbook Ids, therefore this function is much slower.

New in version 4.0.

Return type list[dict]

Raises

- **httplib.HTTPException** – a Connection Error.
- **socket.error** – a Connection Error.
- **ConnectionRefusedError** – a Connection Error.

- **ValueError** – no JSON returned. Wrong URL?

getFullFolderContent (*spaceId*, *filePath*, *trashed*)

Returns a list of file information in a folder of a Space.

Example:

```
$ python ./TeamDriveApi.py '127.0.0.1:45454' getFullFolderContent 3 / False
```

```
[
  {
    "isDir": true,
    "name": "My folder",
    "currentVersionId": 0,
    "spaceId": 3,
    "isInFileSystem": true,
    "path": "/",
    "id": 756,
    "permissions": "rwxr-xr-x"
  },
  {
    "isDir": false,
    "name": "My File",
    "currentVersionId": 0,
    "spaceId": 3,
    "isInFileSystem": true,
    "path": "/",
    "id": 767,
    "permissions": "rwxr-xr-x"
  }
]
```

Note: As this function was added with TeamDrive 4, the fall back for TeamDrive 3 is to iterate over `getFolderContent`, therefore this function is much slower.

See also:

[getFile](#) (page 35) and [getFolderContent](#) (page 36)

New in version 4.0.

Returns A list of [File](#) (page 58) objects

Parameters

- **spaceId** (*int*) – The Id of the Space
- **filePath** (*str*) – The parent folder path.
- **trashed** (*bool*) – In Trash?

Return type list[dict]

Raises

- `httplib.HTTPException` – a Connection Error.
- `socket.error` – a Connection Error.
- `ConnectionRefusedError` – a Connection Error.

- **ValueError** – no JSON returned. Wrong URL?

getLicense()

Returns information about the current License.

Returns

```
{
  "distributor": "DOCU",
  "licenseKey": "DOCU-8782-5485-7266",
  "licenses": [
    "WebDAV",
    "Professional"
  ]
}
```

New in version 4.1.1.

See also:

[*setLicenseKey*](#) (page 52) to set the license.

Return type dict

Raises

- **httplib.HTTPException** – a Connection Error.
- **socket.error** – a Connection Error.
- **ConnectionRefusedError** – a Connection Error.
- **ValueError** – no JSON returned. Wrong URL?

getLoginInformation()

Returns information about the current user.

Return type dict

Raises

- **httplib.HTTPException** – a Connection Error.
- **socket.error** – a Connection Error.
- **ConnectionRefusedError** – a Connection Error.
- **ValueError** – no JSON returned. Wrong URL?

getMember(spaceId, addressId)

Returns information about a member of a Space.

Example:

```
$ python ./TeamDriveApi.py '127.0.0.1:45454' getMember 3 1
```

Returns

```
{
  "status": "active",
  "spaceId": 3,
  "addressId": 1
}
```

Parameters

- **spaceId** (*int*) – The Id of the Space
- **addressId** (*int*) – Already known Addressbook Id.

Return type dict**Raises**

- **httplib.HTTPException** – a Connection Error.
- **socket.error** – a Connection Error.
- **ConnectionRefusedError** – a Connection Error.
- **ValueError** – no JSON returned. Wrong URL?

getProfilePicture (*id*)

Returns the profile picture of the address.

See also:*setProfilePicture* (page 54) to set the profile picture of the current user.

New in version 4.1.1.

Parameters *id* (*int*) – The addressId.**Returns** The picture.**Return type** bytes | dict**Raises**

- **httplib.HTTPException** – a Connection Error.
- **socket.error** – a Connection Error.
- **ConnectionRefusedError** – a Connection Error.

getSettings ()Returns a *list* of settings, with each setting a *dict*. An incomplete list of settings can be found in the *Options* (page 18) Section.**Example :**

```
{
    "key": "identifier",
    "label": "readable label",
    "help": "help text",
    "type": "string|path|integer|bool|enum",
    "value": "current value",
    "options": ["enum option 1", "enum option 2"]
}
```

setSetting (page 54) can be used to set a specific setting.**Return type** list**Raises**

- **httplib.HTTPException** – a Connection Error.
- **socket.error** – a Connection Error.
- **ConnectionRefusedError** – a Connection Error.

- **ValueError** – no JSON returned. Wrong URL?

getSpace (*id*)

Will return information about that Space.

See also:

[*getSpaceStatistics*](#) (page 43) for statistics.

Example using Python:

```
>>> api = TeamDriveApi()
>>> map(api.getSpace, api.getSpaceIds())
[...]
```

Example using curl:

```
curl --user myTeamDriveUser http://127.0.0.1:45454/api/getSpace?id=310
:returns: A single :ref:`space-json-data-type`.
```

Parameters *id* (*int*) – The Id of the Space

Return type dict

Raises

- **httplib.HTTPException** – a Connection Error.
- **socket.error** – a Connection Error.
- **ConnectionRefusedError** – a Connection Error.
- **ValueError** – no JSON returned. Wrong URL?

getSpaceByName (*spaceName*)

This is convenience wrapper of the Python module that is not part of the official API.

Returns a Space by a given Space name. Throws a *TeamDriveException* (page 56), if there is no Space with this name.

Parameters *spaceName* (*str* | *unicode*) – The Name.

Return type dict

Raises

- **httplib.HTTPException** – a Connection Error.
- **socket.error** – a Connection Error.
- **ConnectionRefusedError** – a Connection Error.
- **TeamDriveCallFailed** – There is no Space with this name
- **ValueError** – no JSON returned. Wrong URL?

getSpaceComments (*spaceId*)

Returns a list of all comments that are attached to the Space itself.

Example

```
>>> api = TeamDriveApi()
>>> api.getSpaceComments(13)
```

Returns

```
[
  {
    "creator": "test",
    "creatorAddressId": 1,
    "text": "file baz",
    "created": "2015-09-01T15:15:31Z",
    "commentId": 16,
    "initials": "te"
  },
  {
    "creator": "test",
    "creatorAddressId": 1,
    "deleted": true,
    "created": "2015-09-01T15:15:28Z",
    "commentId": 15,
    "initials": "te"
  }
]
```

See also:

getComments (page 34), *addComment* (page 28), *addSpaceComment* (page 29) and *removeComment* (page 50)

New in version 4.1.1.

Parameters `spaceId` (*int*) – The Space id.

Returns A list of comments.

Return type list[dict]

Raises

- `httplib.HTTPException` – a Connection Error.
- `socket.error` – a Connection Error.
- `ConnectionRefusedError` – a Connection Error.
- `ValueError` – no JSON returned. Wrong URL?

getSpaceIds ()

Returns a list of all known Spaces Ids.

Example:

```
>>> api = TeamDriveApi()
>>> api.getSpaceIds()
[1, 4, 5, 6]
```

Return type list[int]

Raises

- `httplib.HTTPException` – a Connection Error.
- `socket.error` – a Connection Error.
- `ConnectionRefusedError` – a Connection Error.
- `ValueError` – no JSON returned. Wrong URL?

getSpaceMemberIds (*spaceId*)

Returns all Addressbook Ids in a given Space.

Example:

```
$ python ./TeamDriveApi.py '127.0.0.1:45454' getSpaceMemberIds 3
[1,2]
```

New in version 4.0.

Deprecated since version 4.1.1: Use *getSpaceMembers* (page 42) instead.

Return type list[int]

Raises

- **httplib.HTTPException** – a Connection Error.
- **socket.error** – a Connection Error.
- **ConnectionRefusedError** – a Connection Error.
- **ValueError** – no JSON returned. Wrong URL?

getSpaceMembers (*spaceId*)

Returns all Member infos in a given Space.

New in version 4.1.

Return type list[dict]

Raises

- **httplib.HTTPException** – a Connection Error.
- **socket.error** – a Connection Error.
- **ConnectionRefusedError** – a Connection Error.
- **ValueError** – no JSON returned. Wrong URL?

getSpacePermissionLevels ()

Get a list of possible space permission “levels” (ie. read, read/write, admin, etc.) and their capabilities. Permission levels are returned in order of increasing “magnitude”. The reply of this call is constant and won’t change until the agent is restarted.

Returns

```
[
    {
        "id": "none",
        "name": "None",
        "rights": {
            "memberInvite": False,
            "memberKick": False,
            "memberSetRights": False,
            "spaceRename": False,
            "spaceDeleteOnServer": False,
            "filePublish": False,
            "fileDeleteOnServer": False,
            "fileRename": False,
            "fileRestoreFromTrash": False,
            "fileChange": False
        }
    },
]
```

```

        {
            "id": "read",
            "name": "Read"
            "rights": { ... }
        },
        ...
    ]

```

New in version 4.1.1.

Return type dict

Raises

- `httplib.HTTPException` – a Connection Error.
- `socket.error` – a Connection Error.
- `ConnectionRefusedError` – a Connection Error.
- `ValueError` – no JSON returned. Wrong URL?

getSpaceStatistics (*id*)

Returns Space statistics

New in version 4.1.1.

See also:

[getSpace](#) (page 40), [getSpaces](#) (page 43) for other information.

Parameters `id` (*int*) – The Id of the Space

Return type dict

Raises

- `httplib.HTTPException` – a Connection Error.
- `socket.error` – a Connection Error.
- `ConnectionRefusedError` – a Connection Error.
- `ValueError` – no JSON returned. Wrong URL?

getSpaces ()

Returns a list of all known Spaces.

Note: As this function was added with TeamDrive 4, the fall back for TeamDrive 3 is to iterate over all Space Ids, therefore this function is much slower.

See also:

[getSpaceStatistics](#) (page 43) for statistics.

returns A list of [Space](#) (page 57) objects, for example

```

[
  {
    "name": "My Space",
    "creator": "$TMDR-1007",
    "icon": "archived",
    "status": "archived",

```

```

        "status_message": "Space Archived",
        "id": 1,
        "spaceRoot": "/home/teamdrive/Spaces/My Space",
        "time": "2015-09-15T11:17:48Z",
        "permissionLevel": "read"
    },
    {
        "name": "Api",
        "creator": "...",
        "spaceRoot": "/home/teamdrive/Spaces/Api",
        "icon": "space",
        "status": "active",
        "status_message": "OK",
        "id": 8,
        "fileId": 1,
        "time": "2015-09-15T11:17:48Z",
        "permissionLevel": "readWrite"
    }
]

```

New in version 4.0.

Return type dict

Raises

- `httplib.HTTPException` – a Connection Error.
- `socket.error` – a Connection Error.
- `ConnectionRefusedError` – a Connection Error.
- `ValueError` – no JSON returned. Wrong URL?

getVersion (*versionId*)

Returns a single version.

```

>>> versionId = 42
>>> TeamDriveApi().getVersion(versionId) ["versionId"] == versionId

```

New in version 4.1.4.

Parameters `versionId` (*int*) – the id of the version

Return type dict

Raises

- `httplib.HTTPException` – a Connection Error.
- `socket.error` – a Connection Error.
- `ConnectionRefusedError` – a Connection Error.
- `ValueError` – no JSON returned. Wrong URL?

getVersions (*fileId*)

Returns all versions of a file.

New in version 4.1.4.

Return type list[dict]

Raises

- `httplib.HTTPException` – a Connection Error.
- `socket.error` – a Connection Error.
- `ConnectionRefusedError` – a Connection Error.
- `ValueError` – no JSON returned. Wrong URL?

inviteMember (*id, addressId, text, permissionLevel=None, password=None*)
Invites a user into a Space.

Using this function requires the HTTP POST method.

Throws *TeamDriveException* (page 56), if the call fails.

Parameters

- **id** (*int*) – The Id of the Space
- **addressId** (*int*) – Already known Addressbook Id.
- **text** (*str*) – Invitation Text
- **permissionLevel** (*str | None*) – The new user permission Level. Optional.
New in version 4.1.1.
- **password** (*str | None*) – Optional. The password for the invitation.
New in version 4.1.1.

Return type dict

Raises

- `httplib.HTTPException` – a Connection Error.
- `socket.error` – a Connection Error.
- `ConnectionRefusedError` – a Connection Error.
- `TeamDriveException` – Inviting that member failed
- `ValueError` – no JSON returned. Wrong URL?

joinSpace (*id, disableFileSystem, spacePath=None, password=None*)
Accepts an invitation, joins an archived Space or rejoins an active one.

Note: Password protected Invitations: Invitations may be protected by a password and accepting these invitations require the password parameter. If an invitation is password protected, *getSpace* (page 40) adds `"isPasswordProtected": true` to the reply.

Using this function requires the HTTP POST method.

Throws *TeamDriveException* (page 56), if the call fails.

Parameters

- **id** (*int*) – The Id of the Space
- **disableFileSystem** (*bool*) – This will disable the synchronization into the file system. TeamDrive will only synchronize meta-data if this is *True*.
- **spacePath** (*str | None*) – Optional, Space root in the file system.
- **password** (*str | None*) – Optional, Password for accepting this invitation.
New in version 4.1.1.

Return type dict

Raises

- `httplib.HTTPException` – a Connection Error.
- `socket.error` – a Connection Error.
- `ConnectionRefusedError` – a Connection Error.
- `TeamDriveException` – Joining failed
- `ValueError` – no JSON returned. Wrong URL?

kickMember (*spaceId, addressId*)

Removes a member form this Space.

Removing a member from a Space will not remove this user from `getSpaceMemberIds` (page 42), but will set a this member to status “kicked” in `getMember` (page 38).

Using this function requires the HTTP POST method.

Throws `TeamDriveException` (page 56), if the call fails. For example, if the one doesn’t have the rights to remove a user

New in version 4.0.

Parameters

- `spaceId` (*int*) – The Id of the Space
- `addressId` (*int*) – Already known Addressbook Id.

Return type dict**Raises**

- `httplib.HTTPException` – a Connection Error.
- `socket.error` – a Connection Error.
- `ConnectionRefusedError` – a Connection Error.
- `TeamDriveException` – Removing this user failed
- `ValueError` – no JSON returned. Wrong URL?

login ()

A TeamDrive Client installation is bound to a single TeamDrive account. Calling `login` (page 46) authenticates TeamDrive user and creates a new device. this is typically the first call to an Agent.

Using this function requires the HTTP POST method.

Throws `TeamDriveException` (page 56), if the call fails.

Example as Command line:

```
./TeamDriveApi.py '127.0.0.1:45454' --user myUser --pass myPass login
```

Example with Curl:

```
curl 'https://127.0.0.1:45454/login' --data-binary '{"username":"My User","password":"My
```

Example:

```
>>> api = TeamDriveApi("127.0.0.1:45454", "My Username", "My Password")
>>> api.login()
```

Note: On the desktop client, this call is not available, as the API will not be available until the user has successfully logged in. This is a technical limitation of the Gui Client.

See also:

Chapter [Authentication](#) (page 24) regarding Authentication.

Parameters

- **username** (*str*) – The Username
- **password** (*str*) – The Password

Return type dict

Raises

- **httplib.HTTPException** – a Connection Error.
- **socket.error** – a Connection Error.
- **ConnectionRefusedError** – a Connection Error.
- **TeamDriveException** – Logging failed.
- **ValueError** – no JSON returned. Wrong URL?

moveFile (*spaceId, filePath, trashed, newFilePath*)

Moves a file from *filePath* to *newFilePath* in the given Space.

Using this function requires the HTTP POST method.

Throws [TeamDriveException](#) (page 56), if the call fails.

Parameters

- **spaceId** (*int*) – The Id of the Space
- **filePath** (*str*) – the path of the file in the Space.
- **trashed** (*bool*) – Is the file in the trash?
- **newFilePath** (*str*) – The destination file path.

Return type dict

Raises

- **httplib.HTTPException** – a Connection Error.
- **socket.error** – a Connection Error.
- **ConnectionRefusedError** – a Connection Error.
- **TeamDriveException** – Failed to queue command.
- **ValueError** – no JSON returned. Wrong URL?

publishFile (*fileId, password=None, expiryDate=None*)

Publishes the recent version of that file. The parameters *password* and *expiryDate* are optional. Throws [TeamDriveException](#) (page 56), if the call fails.

New in version 4.1.

Parameters

- **fileId** (*int*) – The Id of the Space
- **password** (*str*) – Is the file in the trash?
- **expiryDate** (*str*) – ISO 8601 extended format: either YYYY-MM-DD for dates or YYYY-MM-DDTHH:mm:ss, YYYY-MM-DDTHH:mm:ssTZD (e.g., 1997-07-16T19:20:30+01:00) for combined dates and times.

Return type dict

Raises

- **httplib.HTTPException** – a Connection Error.
- **socket.error** – a Connection Error.
- **ConnectionRefusedError** – a Connection Error.
- **TeamDriveException** – Failed to queue command.
- **ValueError** – no JSON returned. Wrong URL?

putFile (*spaceId, path, data*)

This is a Python specific accessor to the “files” API. The files API is another API endpoint to handle file content instead of meta data. Urls used by the files API are generated by concatenating the API endpoint `files/` plus the local Space Id (eg. 3) plus the full file path relative to the Space root (eg. `/my/path/to/the/file`). Such a url could look like this: `http://127.0.0.1:45454/files/3/my/path/to/the/file`. This API does not support reading and writing files that are in the trash.

This Uploads a file into a Space. The file creation is done asynchronously, a successful return code does not indicate a successful upload to the Server. Use `getFiles` (page 35) to request the current state of that file.

Example using telnet:

```
telnet 127.0.0.1 45454
PUT /files/3/testfile HTTP/1.1
Host: 127.0.0.1:45454
Accept-Encoding: identity
Content-Length: 4

test
```

Example using curl:

```
echo "test" | curl -X PUT -d @- http://127.0.0.1:45454/files/3/testfile
```

Returns

a dict containing a *File* (page 58) object

```
{
  "file": {
    "confirmed": false,
    "creator": "local",
    "currentVersionId": 6156,
    "hasComments": false,
    "icon": "default",
    "id": 7195,
    "isDir": false,
    "name": "testfile",
```

```

        "path": "/",
        "permissions": "rw-rw-r--",
        "size": 4,
        "spaceId": 3,
        "time": "2015-10-22T14:09:45"
    },
    "result": true
}

```

Note: In TeamDrive 3, this API endpoint was called `/webdav`.

Parameters

- **spaceId** (*int*) – The Id of the Space
- **path** (*str*) – the path of the file in the Space.
- **data** – The binary data

Return type dict

Raises

- **httplib.HTTPException** – a Connection Error.
- **socket.error** – a Connection Error.
- **ConnectionRefusedError** – a Connection Error.

putFileContent (*spaceId, spacePath, filePath*)

Note: This is not part of the HTTP API. See [putFile](#) (page 48) instead.

Example:

```
$ python ./TeamDriveApi.py '127.0.0.1:45454' putFileContent 3 /testfile ./testfile
```

Parameters

- **spaceId** (*int*) – The Id of the Space
- **spacePath** (*str*) – the path of the file in the Space.
- **filePath** (*str*) – the path to the local file

Return type dict

Raises **httplib.HTTPException** – a Connection Error.

quit (*logout*)

Quits TeamDrive.

Using this function requires the HTTP POST method.

Throws [TeamDriveException](#) (page 56), if the call fails.

Parameters `logout` (*bool*) – Quit and also log out the current user. See [login](#) (page 46) to log in afterwards.

Return type dict

Raises

- `httplib.HTTPException` – a Connection Error.
- `socket.error` – a Connection Error.
- `ConnectionRefusedError` – a Connection Error.
- `ValueError` – no JSON returned. Wrong URL?

removeComment (*commentId*)

Marks this comment as “removed”

Using this function requires the HTTP POST method.

See also:

[getComments](#) (page 34), [getSpaceComments](#) (page 40), [addComment](#) (page 28) and [addSpaceComment](#) (page 29)

New in version 4.1.1.

Parameters `commentId` (*int*) – The id of the comment that will be deleted.

Return type dict

Raises

- `httplib.HTTPException` – a Connection Error.
- `socket.error` – a Connection Error.
- `ConnectionRefusedError` – a Connection Error.
- `TeamDriveException` – Removing this comment failed
- `ValueError` – no JSON returned. Wrong URL?

removeLocallyFile (*id*, *recursive=False*)

Removes a file form the local file system by disabling the offline-available flag, but does not move this file into the trash or removes the file from the Space. This operation is not synchronized to other clients.

A successful return code does not indicate a successful execution, because it is done asynchronously.

Using this function requires the HTTP POST method.

See also:

[deleteFileFromTrash](#) (page 31) and [setTrashed](#) (page 55).

Parameters

- `id` (*int*) – the file to be removed
- `recursive` (*bool*) – Directories only: recursive remove

Return type dict

Raises

- `httplib.HTTPException` – a Connection Error.
- `socket.error` – a Connection Error.

- **ConnectionRefusedError** – a Connection Error.
- **TeamDriveException** – Failed to queue command.
- **ValueError** – no JSON returned. Wrong URL?

requestResetPassword (*username*)

This call will reset the password of the user.

New in version 4.1.1.

Parameters **username** (*str*) – The Username

Return type dict

Raises

- **httplib.HTTPException** – a Connection Error.
- **socket.error** – a Connection Error.
- **ConnectionRefusedError** – a Connection Error.
- **TeamDriveException** – Logging failed.
- **ValueError** – no JSON returned. Wrong URL?

resolveVersionConflict (*versionId*)

Changes the current version of a file to this version and resolves all version conflicts on this file.

Using this function requires the HTTP POST method.

Throws *TeamDriveException* (page 56), if the call fails.

See also:

setCurrentVersion (page 52)

New in version 4.1.4.

Parameters **versionId** (*int*) – The Id of the version

Return type dict

Raises

- **httplib.HTTPException** – a Connection Error.
- **socket.error** – a Connection Error.
- **ConnectionRefusedError** – a Connection Error.
- **TeamDriveException** – Failed to queue command.
- **ValueError** – no JSON returned. Wrong URL?

restoreLocallyFile (*id*, *recursive=False*)

Restores a file form the local file system. A successful return code does not indicate a successful execution, because it is done asynchronously. This operation is not synchronized to other clients.

Using this function requires the HTTP POST method.

Parameters

- **id** (*int*) – the file to be restored
- **recursive** (*bool*) – Directories only: recursive restore

Return type dict

Raises

- `httplib.HTTPException` – a Connection Error.
- `socket.error` – a Connection Error.
- `ConnectionRefusedError` – a Connection Error.
- `TeamDriveException` – Failed to queue command.
- `ValueError` – no JSON returned. Wrong URL?

setAccountEmail (*email*)

Sets the account e-mail.

Using this function requires the HTTP POST method.

Returns True, if the license key was successfully changed otherwise raises `TeamDriveException` (page 56) Exception

See also:

`setLicenseKey` (page 52) to set the license key.

New in version 4.1.1.

Parameters `email` (*str*) – The new e-mail address

Return type dict

Raises

- `httplib.HTTPException` – a Connection Error.
- `socket.error` – a Connection Error.
- `ConnectionRefusedError` – a Connection Error.
- `ValueError` – no JSON returned. Wrong URL?
- `TeamDriveException` – Failed to set email.

setCurrentVersion (*versionId*)

Changes the current version of a file to this version.

Using this function requires the HTTP POST method.

Throws `TeamDriveException` (page 56), if the call fails.

See also:

`getVersion` (page 44)

New in version 4.1.4.

Parameters `versionId` (*int*) – The Id of the version

Return type dict

Raises

- `httplib.HTTPException` – a Connection Error.
- `socket.error` – a Connection Error.
- `ConnectionRefusedError` – a Connection Error.
- `TeamDriveException` – Failed to queue command.
- `ValueError` – no JSON returned. Wrong URL?

setLicenseKey (*licenseKey*)

Overwrite the license key of this agent.

Using this function requires the HTTP POST method.

Returns True, if the license key was successfully changed otherwise raises *TeamDriveException* (page 56) Exception

See also:

setAccountEmail (page 52) to set the registration e-mail address. *getLicense* (page 38) to retrieve license infos.

Parameters *licenseKey* (*str*) – The new license key

Return type dict

Raises

- **httplib.HTTPException** – a Connection Error.
- **socket.error** – a Connection Error.
- **ConnectionRefusedError** – a Connection Error.
- **ValueError** – no JSON returned. Wrong URL?

setMemberPermissionLevel (*spaceId, addressId, permissionLevel*)

Changes the permission level of another member.

Using this function requires the HTTP POST method.

Throws *TeamDriveException* (page 56), if the call fails. For example, if the one doesn't have the rights to remove a user

New in version 4.1.1.

Parameters

- **spaceId** (*int*) – The Id of the Space
- **addressId** (*int*) – Already known Addressbook Id.
- **permissionLevel** (*str*) – the new permission level

Return type dict

Raises

- **httplib.HTTPException** – a Connection Error.
- **socket.error** – a Connection Error.
- **ConnectionRefusedError** – a Connection Error.
- **TeamDriveException** – Removing this user failed
- **ValueError** – no JSON returned. Wrong URL?

setProfileInfo (*email=None, phone=None, mobile=None*)

Sets profile information of the current user.

See also:

setProfilePicture (page 54) to set the profile picture.

New in version 4.1.1.

Parameters

- **email** (*str* / *None*) – Optional, the new e-mail.
- **phone** (*str* / *None*) – Optional, the new phone number.
- **mobile** (*str* / *None*) – Optional, the new mobile number.

Raises

- **httplib.HTTPException** – a Connection Error.
- **socket.error** – a Connection Error.
- **ConnectionRefusedError** – a Connection Error.
- **ValueError** – no JSON returned. Wrong URL?

setProfilePicture (*data*)

Sets the profile picture of the current user.

See also:

[getProfilePicture](#) (page 39) to retrieve profile pictures and [clearProfilePicture](#) (page 29) to clear the picture.

New in version 4.1.1.

Parameters **data** (*bytes*) – The blob.

Return type dict

Raises

- **httplib.HTTPException** – a Connection Error.
- **socket.error** – a Connection Error.
- **ConnectionRefusedError** – a Connection Error.
- **ValueError** – no JSON returned. Wrong URL?

setSetting (*key*, *value*)

Set a Setting. must be a valid key as in [getSettings](#) (page 39). An incomplete list of settings can be found in the [Options](#) (page 18) Section.

Using this function requires the HTTP POST method.

Parameters

- **key** (*str*) – The name of the setting
- **value** – The new value of the setting

Return type dict

Raises

- **httplib.HTTPException** – a Connection Error.
- **socket.error** – a Connection Error.
- **ConnectionRefusedError** – a Connection Error.
- **ValueError** – no JSON returned. Wrong URL?

setSpaceSetting (*spaceId*, *key*, *value*)

set a Space Setting. must be a valid key as in [getSpaceSettings](#).

Using this function requires the HTTP POST method.

New in version 4.1.2.

Parameters

- **spaceId** (*int*) – The Space id.
- **key** (*str*) – The name of the setting
- **value** – The new value of the setting

Return type dict

Raises

- **httplib.HTTPException** – a Connection Error.
- **socket.error** – a Connection Error.
- **ConnectionRefusedError** – a Connection Error.
- **ValueError** – no JSON returned. Wrong URL?

setTrashed (*fileId, inTrash*)

Moves a file into or out of the trash. Trashing a file also removes the file from the local file system.

Throws *TeamDriveException* (page 56), if the call fails.

Call *deleteFileFromTrash* (page 31) to delete the file physically afterwards.

See also:

removeLocallyFile (page 50) and *deleteFileFromTrash* (page 31).

New in version 4.0.

Parameters

- **fileId** (*int*) – The Id of the Space
- **inTrash** (*bool*) – Is the file in the trash?

Return type dict

Raises

- **httplib.HTTPException** – a Connection Error.
- **socket.error** – a Connection Error.
- **ConnectionRefusedError** – a Connection Error.
- **TeamDriveException** – Failed to queue command.
- **ValueError** – no JSON returned. Wrong URL?

sse ()

This is the Server Side Events api listening on */sse*. This API sends events according to the Server Side Events specification.

The implementation of the python wrapper requires Python 3.

Example Usage:

```
$ python3 TeamDriveApi.py '127.0.0.1:45454' sse
data: { "event" : "FileEntryChanged", "fileId" : 0, "hasConflict" : 0, "isDir" :
      false, "isTrashed" : false, "name" : "my file", "path" :
      "/home/teamdrive/Spaces/My Space", "spaceId" : 3, "synced" : true }

data: { "event" : "SpaceModified", "spaceId" : 3 }
```

Possible Event types are: *FileEntryChanged*, *VersionEntryChanged*, *FileVersionPublished*, *FileVersionUnpublished* and *SpaceModified*

Raises

- `httplib.HTTPException` – a Connection Error.
- `socket.error` – a Connection Error.
- `ConnectionRefusedError` – a Connection Error.
- `ValueError` – no JSON returned. Wrong URL?

`unpublishFile` (*fileId*)

Unpublishes the file. Throws *TeamDriveException* (page 56), if the call fails.

New in version 4.1.

Parameters `fileId` (*int*) – The Id of the Space

Return type dict

Raises

- `httplib.HTTPException` – a Connection Error.
- `socket.error` – a Connection Error.
- `ConnectionRefusedError` – a Connection Error.
- `TeamDriveException` – Failed to queue command.
- `ValueError` – no JSON returned. Wrong URL?

11.6.2 TeamDriveApi.TeamDriveException

class `TeamDriveApi.TeamDriveException` (*name*, *result*)

In case of an error, the TeamDrive API returns a specific JSON document. The python Module will parse this error.

Example using curl:

```
curl -s '127.0.0.1:45454/api/getSpaces'
{
  "error": 50,
  "error_message": "CJsonApi::ApiError (Error_Missing_Session)",
  "result": false,
  "status_code": 500
}
```

Example using the command line:

```
$ ./TeamDriveApi.py '127.0.0.1:45454' getSpaces
Traceback (most recent call last):
  File "./TeamDriveApi.py", line 1178, in <module>
    main()
  File "./TeamDriveApi.py", line 1174, in main
    result = (getattr(TeamDriveApi, command)(api, *params))
  File "./TeamDriveApi.py", line 307, in getSpaces
    return self._call("getSpaces")
  File "./TeamDriveApi.py", line 204, in _call
    return self._call(name, params, method)
  File "./TeamDriveApi.py", line 205, in _call
```

```

        raise TeamDriveException(name, jsonRes)
__main__.TeamDriveException: Call getSpaces failed with {'status_code': 500, u'error_message':

```

Error_HTTP_Method_Not_Allowed = 2

Error_Insufficient_Rights = 30

Error_Internal_Error = 1

Error_Invalid_File_Key = 43

Error_Invalid_Parameter = 21

Error_Missing_Parameter = 20

Error_Missing_Session = 50
No or invalid credentials supplied.

See also:

Chapter *Authentication* (page 24).

Error_Unknown_AddressId = 42

Error_Unknown_Error = 3

Error_Unknown_Space = 40

Error_Unknown_User = 41

Error_Wrong_Login = 51

getError()
The TeamDrive API Exception code :rtype: int

getErrorString()
A human readable version of this error :rtype: str

getStatusCode()
The HTTP status code of this exception. :rtype: int

11.7 Common JSON Data Types

The API returns common data types encoded in JSON objects for different API functions. This section provides an overview of some of these data types.

11.7.1 Space

This JSON object describes meta information about a single Space.

Member	Description
id	Id of the Space. Used to identify a specific Space
fileId	FileId of the root-folder in this Space. Only present for active Spaces
name	Name of the Space
spaceRoot	Local path to the Space.
invitor	Invitations only: User name who created the invitation.
creator	User name who created the Space
status	Describes the current status of this Space.
isPasswordProtected	Invitations only: This invitation needs a password. Obmitted if false.
time	Datetime of the last modification of this Space.
text	Invitation comment
permissionLevel	Permission level of the current user in this Space. (Not for invitations)
isOfflineAvailable	<code>true</code> , if the Space will be synchronized to the local file system. TeamDrive will only synchronize meta-data if this is <code>false</code> (Not for invitations)

Example:

```
{
  "name": "Api",
  "creator": "...",
  "spaceRoot": "/home/teamdrive/Spaces/Api",
  "icon": "space",
  "status": "active",
  "status_message": "OK",
  "id": 8,
  "fileId": 1
}
```

11.7.2 File

This JSON object describes meta information about a single File or directory.

Member	Description
name	File or Folder Name
id	Local Id. Mainly used as parameter.
spaceId	Space Id of the file.
path	Path to the file excluding the name.
currentVersionId	Version id that should be in the file system
isDir	Boolean value. <code>true</code> for directories.
permissions	Unix permissions
creator	User name of the file creator.
created	file creation time.
confirmed	The current version is synchronized to the server. (Files only)
size	The size in bytes of the current version. (Files only)
lastModified	Last modification time. (Files only)
publicUrl	URL to the file if it is published. (Files only)
hasComments	Boolean value.

Example:

```
{
  "isDir": true,
  "name": "My folder",
  "currentVersionId": 0,
  "spaceId": 3,
}
```

```

    "isInFileSystem": true,
    "path": "/",
    "id": 756,
    "permissions": "rwxr-xr-x"
  }

```

11.7.3 Addressbook Entry

This JSON object describes meta information about a addressbook entry.

Member	Description
id	Addressbook entry Id
name	User display name
email	Registration Email
profile	Profile information
initials	User's initials

Where Profile information is a JSON object containing:

Member	Description
email	Display Email
phone	Phone number
mobile	Mobile nubner
hasProfilePicture	Boolean value. <code>true</code> for User's with profile picture.

CHANGE LOGS

12.1 TeamDrive Agent 4.1.4

- added `getVersion` (page 44), `getVersions` (page 44), `deleteVersion` (page 32), `resolveVersionConflict` (page 51) and `setCurrentVersion` (page 52).

12.2 TeamDrive Agent 4.1,3

- deprecated: `teamdrived --language` (page 18).

12.3 TeamDrive Agent 4.1.2

- added `setSpaceSetting` (page 54).
- added `teamdrived --enable-shell-extension` (page 19).

12.4 TeamDrive Agent 4.1.1

- added `setAccountEmail` (page 52)
- `about` (page 27) no longer returns license info. call `getLicense` (page 38) instead.
- added `requestResetPassword` (page 51)
- added `getProfilePicture` (page 39), `setProfilePicture` (page 54), `clearProfilePicture` (page 29) and `setProfileInfo` (page 53)
- added `getComments` (page 34), `getSpaceComments` (page 40), `addComment` (page 28), `addSpaceComment` (page 29) and `removeComment` (page 50)
- deprecated `getSpaceMemberIds` (page 42)
- added `getSpacePermissionLevels` (page 42), `setMemberPermissionLevel` (page 53), added permission levels to Member related calls.
- added `getSpaceStatistics` (page 43)
- added ability to handle password protected invitations in `joinSpace` (page 45) and `inviteMember` (page 45)
- added `getActivities` (page 32) and `getActivityDetails` (page 33)

- added `teamdrived --idle-shutdown-timeout` (page 21), `teamdrived --http-api-external-register-url` (page 21) and `teamdrived --http-api-external-login-url` (page 21)

12.5 TeamDrive Agent 4.1

- Added `createFolder` (page 29), `publishFile` (page 47) and `unpublishFile` (page 56).
- Added documentation of the `/sse` API

12.6 TeamDrive Agent 4.0

- All modifying calls require HTTP POST requests, for example `createFolder` or `deleteSpace`
- Client Authentication is **required**
- Added `getSpaces` (page 43), `getFullFolderContent` (page 37), `getFullAddressbook` (page 36), `setTrashed` (page 55) and `createFolder` (page 29)
- Changed the Exception response.
- added `getMember` (page 38) to retrieve the status of a member

12.7 TeamDrive Agent 3.3.1

- added `getSpaceMemberIds` (page 42)

12.8 Web User Interface 1.0.2

- Create Space Dialog: Added Server selection. (Requires Agent 4.1.2).
- Improved error message if there is no depot usage available.
- Added automatic redirect to the external login url on the login page.
- Fixed a bug regarding custom user rights (Only TeamDrive 3 Spaces affected)

INDICES AND TABLES

- `genindex`

Symbols

- auto-accept-invitation-mode (default: archived)
teamdrived command line option, 19
- auto-accept-invitation=true/false (default: false)
teamdrived command line option, 19
- auto-invite-users=list
teamdrived command line option, 19
- autostart-delay
teamdrived command line option, 19
- backup-path
teamdrived command line option, 18
- check-for-updates=true/false (default: true)
teamdrived command line option, 19
- data-path
teamdrived command line option, 18
- default-dir-permissions
teamdrived command line option, 20
- default-file-permissions
teamdrived command line option, 20
- default-publish-expiry-days (default: 0)
teamdrived command line option, 20
- default-server
teamdrived command line option, 18
- device=<device>
teamdrived command line option, 19
- enable-create-favorite-link-to-spaces=true/false (default: true)
teamdrived command line option, 19
- enable-folder-decoration=true/false (default: true)
teamdrived command line option, 19
- enable-key-repository=true/false (default: true)
teamdrived command line option, 19
- enable-multi-processes=true/false (default: false)
teamdrived command line option, 19
- enable-shell-extension=true/false (default: true)
teamdrived command line option, 19
- http-api-certificate
teamdrived command line option, 20
- http-api-compress-replies=true/false (default: true)
teamdrived command line option, 21
- http-api-external-login-url
teamdrived command line option, 21

- http-api-external-register-url
teamdrived command line option, 21
- http-api-port=<host>
teamdrived command line option, 20
- http-api-private-key
teamdrived command line option, 20
- http-api-type
teamdrived command line option, 20
- idle-shutdown-timeout
teamdrived command line option, 21
- language
teamdrived command line option, 18
- perform-backup=true/false (default: true)
teamdrived command line option, 18
- scan-enabled=true/false (default: true)
teamdrived command line option, 20
- spaces-path
teamdrived command line option, 18
- teamdrive-home
teamdrived command line option, 18
- working-set-size
teamdrived command line option, 19

A

- about() (TeamDriveApi.TeamDriveApi method), 27
- addAddressbook() (TeamDriveApi.TeamDriveApi method), 28
- addComment() (TeamDriveApi.TeamDriveApi method), 28
- addSpaceComment() (TeamDriveApi.TeamDriveApi method), 29
- autostart
teamdrived command line option, 19

C

- clearProfilePicture() (TeamDriveApi.TeamDriveApi method), 29
- createFolder() (TeamDriveApi.TeamDriveApi method), 29
- createSpace() (TeamDriveApi.TeamDriveApi method), 30

D

deleteFileFromTrash() (TeamDriveApi.TeamDriveApi method), 31

deleteSpace() (TeamDriveApi.TeamDriveApi method), 31

deleteVersion() (TeamDriveApi.TeamDriveApi method), 32

E

Error_HTTP_Method_Not_Allowed (Team-attribute), DriveApi.TeamDriveException 57

Error_Insufficient_Rights (Team-attribute), DriveApi.TeamDriveException 57

Error_Internal_Error (Team-attribute), DriveApi.TeamDriveException 57

Error_Invalid_File_Key (Team-attribute), DriveApi.TeamDriveException 57

Error_Invalid_Parameter (Team-attribute), DriveApi.TeamDriveException 57

Error_Missing_Parameter (Team-attribute), DriveApi.TeamDriveException 57

Error_Missing_Session (Team-attribute), DriveApi.TeamDriveException 57

Error_Unknown_AddressId (Team-attribute), DriveApi.TeamDriveException 57

Error_Unknown_Error (Team-attribute), DriveApi.TeamDriveException 57

Error_Unknown_Space (Team-attribute), DriveApi.TeamDriveException 57

Error_Unknown_User (Team-attribute), DriveApi.TeamDriveException 57

Error_Wrong_Login (Team-attribute), DriveApi.TeamDriveException 57

G

getActivities() (TeamDriveApi.TeamDriveApi method), 32

getActivityDetails() (TeamDriveApi.TeamDriveApi method), 33

getAddressbook() (TeamDriveApi.TeamDriveApi method), 33

getAddressbookByName() (Team-DriveApi.TeamDriveApi method), 33

getAddressbookIds() (TeamDriveApi.TeamDriveApi method), 34

getComments() (TeamDriveApi.TeamDriveApi method), 34

getError() (TeamDriveApi.TeamDriveException method), 57

getErrorString() (TeamDriveApi.TeamDriveException method), 57

getFile() (TeamDriveApi.TeamDriveApi method), 35

getFiles() (TeamDriveApi.TeamDriveApi method), 35

getFolderContent() (TeamDriveApi.TeamDriveApi method), 36

getFullAddressbook() (TeamDriveApi.TeamDriveApi method), 36

getFullFolderContent() (TeamDriveApi.TeamDriveApi method), 37

getLicense() (TeamDriveApi.TeamDriveApi method), 38

getLoginInformation() (TeamDriveApi.TeamDriveApi method), 38

getMember() (TeamDriveApi.TeamDriveApi method), 38

getProfilePicture() (TeamDriveApi.TeamDriveApi method), 39

getSettings() (TeamDriveApi.TeamDriveApi method), 39

getSpace() (TeamDriveApi.TeamDriveApi method), 40

getSpaceByName() (TeamDriveApi.TeamDriveApi method), 40

getSpaceComments() (TeamDriveApi.TeamDriveApi method), 40

getSpaceIds() (TeamDriveApi.TeamDriveApi method), 41

getSpaceMemberIds() (TeamDriveApi.TeamDriveApi method), 42

getSpaceMembers() (TeamDriveApi.TeamDriveApi method), 42

getSpacePermissionLevels() (Team-DriveApi.TeamDriveApi method), 42

getSpaces() (TeamDriveApi.TeamDriveApi method), 43

getSpaceStatistics() (TeamDriveApi.TeamDriveApi method), 43

getStatusCode() (TeamDriveApi.TeamDriveException method), 57

getVersion() (TeamDriveApi.TeamDriveApi method), 44

getVersions() (TeamDriveApi.TeamDriveApi method), 44

I

inviteMember() (TeamDriveApi.TeamDriveApi method), 45

J

joinSpace() (TeamDriveApi.TeamDriveApi method), 45

K

kickMember() (TeamDriveApi.TeamDriveApi method), 46

L

login() (TeamDriveApi.TeamDriveApi method), 46

M

moveFile() (TeamDriveApi.TeamDriveApi method), 47

P

publishFile() (TeamDriveApi.TeamDriveApi method), 47

putFile() (TeamDriveApi.TeamDriveApi method), 48

putFileContent() (TeamDriveApi.TeamDriveApi method), 49

Q

quit() (TeamDriveApi.TeamDriveApi method), 49

R

removeComment() (TeamDriveApi.TeamDriveApi method), 50

removeLocallyFile() (TeamDriveApi.TeamDriveApi method), 50

requestResetPassword() (TeamDriveApi.TeamDriveApi method), 51

resolveVersionConflict() (TeamDriveApi.TeamDriveApi method), 51

restoreLocallyFile() (TeamDriveApi.TeamDriveApi method), 51

RFC

RFC 2617, 25

S

setAccountEmail() (TeamDriveApi.TeamDriveApi method), 52

setCurrentVersion() (TeamDriveApi.TeamDriveApi method), 52

setLicenseKey() (TeamDriveApi.TeamDriveApi method), 52

setMemberPermissionLevel() (TeamDriveApi.TeamDriveApi method), 53

setProfileInfo() (TeamDriveApi.TeamDriveApi method), 53

setProfilePicture() (TeamDriveApi.TeamDriveApi method), 54

setSetting() (TeamDriveApi.TeamDriveApi method), 54

setSpaceSetting() (TeamDriveApi.TeamDriveApi method), 54

setTrashed() (TeamDriveApi.TeamDriveApi method), 55

shutdown
teamdrived command line option, 19

sse() (TeamDriveApi.TeamDriveApi method), 55

T

TeamDriveApi (class in TeamDriveApi), 27

teamdrived command line option

–auto-accept-invitation-mode (default: archived), 19
–auto-accept-invitation=true/false (default: false), 19

–auto-invite-users=list, 19

–autostart-delay, 19

–backup-path, 18

–check-for-updates=true/false (default: true), 19

–data-path, 18

–default-dir-permissions, 20

–default-file-permissions, 20

–default-publish-expiry-days (default: 0), 20

–default-server, 18

–device=<device>, 19

–enable-create-favorite-link-to-spaces=true/false (default: true), 19

–enable-folder-decoration=true/false (default: true), 19

–enable-key-repository=true/false (default: true), 19
–enable-multi-processes=true/false (default: false), 19

–enable-shell-extension=true/false (default: true), 19

–http-api-certificate, 20

–http-api-compress-replies=true/false (default: true), 21

–http-api-external-login-url, 21

–http-api-external-register-url, 21

–http-api-port=<host>, 20

–http-api-private-key, 20

–http-api-type, 20

–idle-shutdown-timeout, 21

–language, 18

–perform-backup=true/false (default: true), 18

–scan-enabled=true/false (default: true), 20

–spaces-path, 18

–teamdrive-home, 18

–working-set-size, 19

autostart, 19

shutdown, 19

webgui, 19

TeamDriveException (class in TeamDriveApi), 56

U

unpublishFile() (TeamDriveApi.TeamDriveApi method), 56

W

webgui

teamdrived command line option, 19